

# WHERE FARMING STARTS

*Product Guide 2024*



**FLAMAN**

## GRAIN STORAGE & HANDLING SOLUTIONS

GRAIN BIN STORAGE	<b>04</b>
MERIDIAN GALVANIZED BINS	<b>06</b>
MERIDIAN SMOOTHWALL	<b>08</b>
WESTEEL MAGNUM SERIES	<b>09</b>
AGI NECO GRAIN DRYER	<b>10</b>
OAKLAND GRAIN DRYER	<b>11</b>
GRAIN HANDLING SYSTEMS	<b>12</b>
WALINGA ULTRA-VEYOR	<b>14</b>
AGI HUTCHINSON & SCREW CONVEYORS	<b>15</b>
AGI WRX & UTILITY AUGERS	<b>16</b>
GRAIN MONITORING	<b>17</b>
TRANSFER AUGERS & CONVEYORS	<b>18</b>
AGI X <sup>2</sup> SERIES AUGERS	<b>19</b>

AGI XTA AUGERS	<b>20</b>
AGI UTX AUGERS	<b>21</b>
EDGE AGRO AUGERS	<b>22</b>
MERIDIAN AUGERS	<b>23</b>
MERIDIAN CONVEYORS	<b>24</b>
CONVEY-ALL CONVEYORS	<b>25</b>
AGI BATCO CONVEYORS	<b>26</b>
AERATION SOLUTIONS	<b>28</b>
AGI GRAIN GUARD	<b>29</b>
GATCO PRODUCTS	<b>30</b>
AUGER & BIN ACCESSORIES	<b>31</b>

## GRAIN CLEANING & ANALYSIS

GRAIN ANALYSIS	<b>32</b>
CUSTOM SCREENS	<b>33</b>

KWIK KLEEN GRAIN CLEANERS	<b>34</b>
GCS GRAIN CLEANERS	<b>34</b>
BENCH GRAIN CLEANERS	<b>35</b>

## FARM IMPLEMENTS

GRAIN VACS	<b>36</b>
GRAIN BAGGERS	<b>37</b>
GRAIN EXTRACTORS	<b>38</b>
GRAIN BAGS & BAG ROLLER	<b>39</b>
J&M GRAIN CARTS	<b>40</b>
CONVEY-ALL SEED TENDERS	<b>42</b>
HAUL ALL SEED TENDERS	<b>44</b>
HAUL ALL GRAIN TRAILERS	<b>45</b>
BRUNS GRAIN WAGONS	<b>46</b>
LANDOLL WEATHERPROOFER	<b>47</b>
KELLO-BILT DISCS	<b>48</b>

## Frank Flaman Foundation

Flaman Group of Companies gives back through the Frank Flaman Foundation, which supports charities and projects locally and internationally. Flaman team members take part in development projects worldwide and are also active participants in their communities.



[flaman.com/foundation](http://flaman.com/foundation)

## People together, doing what's right, making a difference.

It's not just a company you work for, it's a family you are a part of. Making things better is one of Flaman's three core values. Our family has a diverse group of people with the drive to improve their communities and we are happy to be a part of it.

Here are a few highlights:



### Swan Valley Immigrant Services Winter Sled Event

Flaman sponsored the food and prizes and the Swan River staff, along with their families, donated their time to help with the Winter Sled Event hosted by Swan Valley Immigrant Services, an organization that welcomes and provides support to newcomers as they settle into life in a new community.



WISHEK HEAVY DISCS	<b>49</b>	PALLET FORKS	<b>64</b>	FLAT DECK TRAILERS	<b>74</b>
KINZE MACH TILL	<b>50</b>	WIRE SPOOLER	<b>64</b>	DUMP TRAILERS	<b>76</b>
BRILLION DISC RIPPER	<b>51</b>	FERTILIZER SPREADERS	<b>64</b>	ENCLOSED TRAILERS	<b>78</b>
RITEWAY LAND ROLLERS	<b>52</b>	U-DRAIN FLOOR DRAIN	<b>65</b>	STOCK TRAILERS	<b>80</b>
RITEWAY HARROWS	<b>53</b>	FUEL LOCK	<b>66</b>	SPECIALTY TRAILERS	<b>81</b>
SCHULTE DISC HARROW	<b>54</b>	DIESEL & DEF TANKS	<b>66</b>	SLED TRAILERS	<b>82</b>
DUTCH BIOSPREADER	<b>55</b>	FUEL TANKS	<b>67</b>	UTILITY TRAILERS	<b>83</b>
ROTARY CUTTERS	<b>56</b>	BUFFER VALLEY BINS	<b>68</b>		
SCHULTE ROCK REMOVAL	<b>58</b>			<b>RENTALS</b>	
SNOW BLOWERS	<b>59</b>	<b>TOPKROP FERTILIZERS</b>		AG EQUIPMENT RENTALS	<b>84</b>
BOX SCRAPERS & GRADERS	<b>60</b>	FOLIAR FERTILIZERS	<b>69</b>	HAY & LIVESTOCK RENTALS	<b>86</b>
ROTOTILLERS	<b>61</b>	HUMIC PRODUCTS	<b>70</b>	LANDSCAPING RENTALS	<b>87</b>
WOOD CHIPPERS	<b>61</b>	ACF-SR BACTERIA	<b>71</b>	CONSTRUCTION RENTALS	<b>87</b>
AGI POST POUNDERS	<b>62</b>			TRAILER RENTALS	<b>88</b>
SWATH ROLLERS & HAY RAKES	<b>63</b>	<b>TRAILERS</b>			
BALE SPEARS & CARTS	<b>63</b>	SPRAYER & SEMI TRAILERS	<b>72</b>	<b>ABOUT US</b>	
BRILLION SEEDERS	<b>64</b>			LOCATIONS & MAPS	<b>90</b>

## JOIN OUR EXTENDED FAMILY



### Donation to the Medicine Hat Women's Shelter Society

Chris delivered a cheque to the Medicine Hat Women's Shelter Society to help

those fleeing family violence and abuse build a future full of safety and hope.



### Donation to the Saskatoon Interval House

Samuel and Lexxa delivered a cheque to the Saskatoon Interval House, an organization that provides safe

accommodation, support, and resources for women and children leaving domestic violence and abuse.

Flaman is a group of individuals working together as a team to reach our #1 goal of Customer Responsibility. We call ourselves an “extended family” and we all value the support, team atmosphere, autonomy, and social interaction that are key to our culture and success.

[www.flaman.com/careers](http://www.flaman.com/careers)





# STRESS FREE BIN BUYING

From the concrete pad to the monitoring systems, we can help.



**UNSTIFFENED BINS**  
From 15' to 48' diameter

SIZE	BU RANGE	HEIGHT
15'	2,300 – 5,100	19' – 37'
18'	3,400 – 9,800	20' – 49'
21'	4,800 – 13,400	21' – 50'
24'	6,300 – 17,600	21' – 51'
27'	8,000 – 22,500	22' – 52'
30'	10,000 – 28,000	23' – 53'
33'	14,900 – 39,800	24' – 54'
36'	15,000 – 40,000	25' – 55'
42'	21,000 – 56,000	26' – 56'
48'	28,000 – 73,000	28' – 58'

## FLAT BOTTOM BINS

**Commercial Series capacity up to 684,240 BU**  
**Farm Series capacity up to 73,790 BU**

### FEATURES

- 4" corrugated sheets
- Roof manhole
- 30° roof corrugated with 3" ribs
- Roof ladder
- Spiral staircase
- 40" filler cap remote opener
- Large walk through door, 64" x 30"

### OPTIONS

- Temperature and moisture cables
- U-Trough unload
- Full floor aeration systems
- Round or gooseneck vents
- Exterior stiffeners
- 9" bin sweep



STIFFENED BINS



FULL FLOOR AERATION



SPIRAL STAIRCASE





**We can help you with Hopper Cones, Bucket Elevators, Cat Walks, Ladders, Custom Fabrication, Grain Cleaning, Grain Processing, and Seed Treating.**

## HOPPER BOTTOM BINS

**Available in 15' to 27' diameter and sizes up to 17,020 BU**

### FEATURES

- 24" ground clearance varies by manufacturer
- 40" lid with remote
- Manholes in roof and hopper cone
- Set up crews available

### OPTIONS

- Temperature cables, moisture cables, and remote monitoring
- Aeration (straight duct, Grain Guard rocket, or Gatco crossflow)
- Saf-T-Fill or LevALERT bin level indicator
- Spiral staircase or ladder with safety cage
- Steel skid foundation
- Rack and pinion gates
- Roof vents
- Leg extensions



ROOF VENTS



SAFETY CAGE

## HOPPER PACKAGES

SIZE	BU	HEIGHT	AUGER
1805	4,900	33' 10"	61'
1806	5,679	37' 6"	66'
2105	6,893	35' 11"	61'
2106	7,953	39' 7"	70'
2406	10,437	42' 4"	71'
2407	11,710	43' 11"	84'
2707	15,250	46'	84'
2708	17,020	49' 8"	94'

*BU capacity may vary depending on cone manufacturer*

**OTHER SIZES AVAILABLE**



CUSTOM CONCRETE FOUNDATIONS



AERATION SOLUTIONS

# MERIDIAN GALVANIZED BINS AND HOPPER COMBOS

Available in sizes up to 56,000 bushels!



## FLAT BOTTOM BINS

Available in sizes up to 56,000 bushels

### FEATURES

- Heavy galvanized sheets for superior strength
- Double bolted vertical seams
- 30° roof slope and large bin lid
- Exterior side wall and roof ladder
- 3 panel walk-in door

### OPTIONS

- Full floor aeration (.050 perf.)
- Welded truss supports
- 11" U-Trough unload and 7.25" bin sweep
- Roof vents (18" rd.) and fans
- Interior sidewall ladder
- Spiral staircase (single or dual platform)

### TURN-KEY PACKAGES INCLUDE:

- Concrete pads
- Fully assembled including options
- Electrical hookup and site prep not included

## FLAT BOTTOM BINS

SIZE	BU RANGE
15'	2,876 – 4,006
18'	4,195 – 9,893
21'	5,781 – 13,527
24'	7,643 – 17,772
27'	9,798 – 22,613
30'	12,242 – 28,069
33'	14,988 – 34,154
36'	18,044 – 40,822
42'	25,133 – 56,143

## HOPPER COMBOS

SIZE	BU
18' 5 Ring	4,870
18' 6 Ring	5,684
21' 5 Ring	6,759
21' 6 Ring	7,869
24' 5 Ring	9,049
24' 6 Ring	10,498
27' 6 Ring	13,600

## FULLY ASSEMBLED COMBOS

Set up on farm (18', 21' & 24')

24' cone – split bolt together or fully welded



## SAFETY FIRST

Protect your family from one of the most common accident locations on the farm.

### Economical Fall Arrest Safety Cables



Compatible with both smoothwall and galvanized bins. Includes 4' lanyard, fall protection harness, and rope grab.

### Meridian Ladder Cage and Handrails



## HOPPER COMBOS

Available in sizes up to 13,600 bushels

### FEATURES

- 35° hopper cone
- HSS Tubing – legs and supports
- Heavy galvanized sheets for superior strength
- Double bolted vertical seams
- 30° roof slope
- Rack and pinion unload gate
- 27" bin lid with remote opener
- Exterior side wall and roof ladder
- Manhole and manway

### OPTIONS

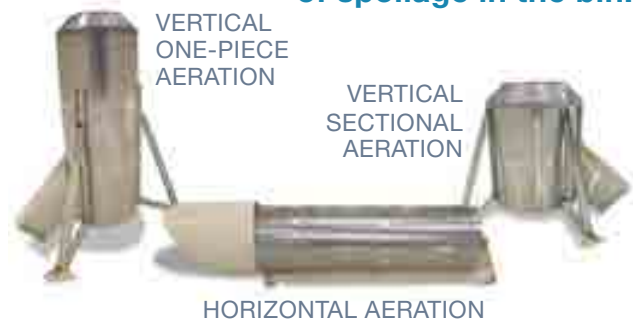
- Double, triple, or quad skirts
- Vertical or horizontal aeration
- LevAlert bin level indicator
- Spiral staircase
- Temperature and moisture monitoring
- Aeration fan

## AIRMAX AERATION

Natural air drying system

- Designed to easily retrofit your existing hopper bins
- Retro system is designed and approved for installation in steeper cones and use in high moisture grain
- Larger screen surface area maximizes the effectiveness of your drying, cooling, and aeration efforts
- Optional extra support leg increases stability in high-flow applications
- Full support legs ensure a durable, problem-free system

Decrease the chance of spoilage in the bin.



VERTICAL ONE-PIECE AERATION

VERTICAL SECTIONAL AERATION

HORIZONTAL AERATION

Special Order in Saskatchewan & Manitoba



# MERIDIAN SMOOTHWALL BINS



**Book with Flaman and simplify your bin buying. Leasing available.**

## GRAIN MAX BINS

**Meridian Grain Max hopper bins offer top quality grain and seed storage at prices comparable to corrugated hopper combos.**

Without bolts and ribs, the seamless interior allows for safe and easy unloading, while ensuring no seed or contaminants are trapped on walls or joints.

MODEL	BU	HEIGHT	AUGER
GM2300	2,301	26' 3"	46'
GM3000	3,264	28' 11"	51'
GM4000	4,119	33' 11"	61'
GM5000	4,973	38' 11"	71'
GM5300	5,324	35' 6"	61'
GM6400	6,405	40' 6"	71'
GM7500	7,488	45' 6"	76'

OTHER SIZES AVAILABLE

## MULTI-PURPOSE BINS

**These durable bins are completely pre-welded, inspected, and treated with Meridian's premium powder coating inside and out.**

The premium powder coat finish allows for many years of corrosion and abrasion resistance even with fertilizer storage.

MODEL	CAPACITY	HEIGHT	AUGER
1412	69 MT	25' 3"	46'
1612	91 MT	25' 11"	46'
1615	108 MT	28' 11"	51'
1620	136 MT	33' 11"	61'
1625	165 MT	38' 11"	71'
1630	193 MT	43' 11"	71'
1820	176 MT	35' 6"	61'
1825	212 MT	40' 6"	71'

OTHER SIZES AVAILABLE

## AVAILABLE OPTIONS



SKID FOUNDATION



AUGER BOOT



LADDER CAGE & HANDRAILS

# WESTEEL MAGNUM SERIES

Strength, stability,  
and weather-tight protection.

*Special Order in Alberta*

## GRAIN BINS

**Westeel Magnum-G smoothwall bins store grain, seed, and feed safely with easy clean-out and corrosion protection.**

Constructed with heavy-duty steel, a superior paint finish, and exceptional clean-out, Westeel bins are designed for optimal strength and longevity.

MODEL	BU	HEIGHT	AUGER
1208G	1,140	19.1'	36'
1412G	2,050	23.7'	41'
1612G	2,850	25.9'	46'
1616G	3,500	29.9'	51'
1620G	4,200	33.9'	61'
1624G	4,900	37.9'	61'
1628G	5,400	40.9'	71'
1630G	5,730	42.9'	71'
1632G	6,070	44.9'	71'

## FERTILIZER BINS

**Westeel Magnum-F smoothwall hopper bottom bins are ideal for safe, long-term storage of fertilizer, grain, and seed.**

Westeel Magnum smoothwall bins are designed to provide years of trouble-free clean-out and superior protection from corrosion.

MODEL	CAPACITY	HEIGHT	AUGER
1208F	42 MT	19.1'	36'
1408F	54 MT	19.7'	36'
1412F	73 MT	23.7'	41'
1416F	92 MT	27.7'	51'
1612F	100 MT	25.9'	46'
1616F	125 MT	29.9'	51'
1620F	147 MT	33.9'	61'
1624F	170 MT	37.9'	61'
1628F	198 MT	40.9'	71'

## AVAILABLE OPTIONS



LADDER CAGE & HANDRAILS



HD SKID FOUNDATION



REMOTE VENTED TOP LID



# AGI NECO MIXED FLOW GRAIN DRYER

Available dryer sizes: 16', 24', and 32'

## BENEFITS

- One of the most efficient dryers on the market
- Mixed flow drying process maintains the grain quality while reducing the risk of crop damage
- Even heating and cooling provides better kernel to kernel consistency
- Commander Control with Dryer Master moisture control system offers an easy-to-use touch screen navigation, tracking and graphic capabilities, and alarm and troubleshooting assistance
- Remote management from your smartphone or computer

## FLEXIBLE OPERATION CAPABILITY

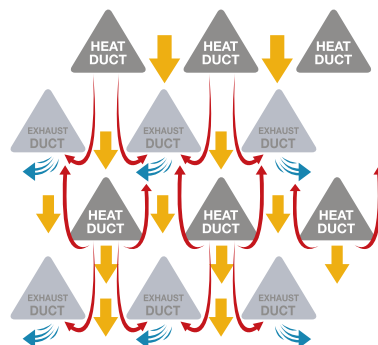
- Multiple options for drying include full heat, heat and cool, steeping mode, or sweating mode
- Dual moisture control
- Moisture sensors work together to speed up or slow down your dryer based on the grain

## QUIET AND EFFICIENT FANS

- Consistent, high volume air flow at lower speeds with forward curved blades
- Fans produce just 80–90 dB compared to competitors at 120 dB

## HOW IT WORKS

Heated air travels through the column of moving grain via the internal heat ducts, making the drying process more efficient as well as conserving the quality of grain. The heated air then exits through the outer exhaust ducts.



Commander Control PLC Dryer Control System



### Scan to watch!



Customer Nolan G. shares why he uses his AGI NECO grain dryer as a **harvest management tool** to get his crop off in good weather while **ensuring grain quality**.

SIZE	BU/HR
16'	674 – 1,539
24'	1,155 – 3,750
32'	2,693 – 5,001





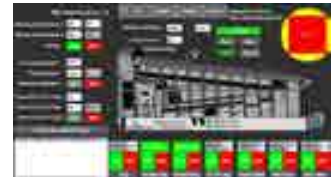
# OAKLAND DOUBLE FLOW GRAIN AND SEED DRYER

## BENEFITS

- Low maintenance and clean up
- Very gentle on different grains
- Virtually no maintenance on bearings and no belts to wear out
- No screens to clean
- Switch grains without emptying the dryer
- Superior structure and workmanship
- Low profile and low noise with chaff control

## ELECTRONIC AND GAS TRAIN SYSTEM

- High quality electric and electronic parts
- Easily switch between propane and natural gas
- Mechanically conveyed – meaning less possible fire risk with no bridging or hot spots created



MONITOR THE DRYER FROM A SMARTPHONE OR COMPUTER



### Ship Unit Anywhere

The top end of the dryer unbolts from the bottom helping you save money when shipping the unit.



### Auto Shutoff

Equipped with multiple safety features to ensure safe startup and operation.



### Control the Grain Depth

You have the option of controlling the grain depth on the bed.



### Variable Frequency Drive

All of our motors are VFD (Variable Frequency Drive).



MODEL	HOT FANS	CFM	COLD FANS	SIZE
OL4100	(1) 60 HP	45,000	(1) 25 HP	41' L x 11'8" W
OL5300	(2) 60 HP	90,000	(2) 25 HP	54' L x 12' W

Available in Saskatchewan only



## DESIGN & LAYOUT



## SETUP & INSTALLATION



## MAINTENANCE & SERVICE



# GRAIN HANDLING

**From start to finish.**

**We specialize in full solution grain handling setups, grain dryer systems, grain cleaning and processing plants, and automated bin sites.**

Our team of consultants and industry experts, purchasers, service specialists, and support staff can help with any aspect of business related to your grain handling equipment including:

- Design and layout
- Equipment and parts
- Setup and installation
- Maintenance and service

We can provide, install, and service:

- Horizontal, incline, and overhead conveyors
- Flow systems and accessories
- Support towers, safety structures, and catwalks





We offer all the necessary components required for grain handling systems including bucket elevators, screw conveyors, belt conveyors, inline chain conveyors, horizontal chain conveyors, and more.

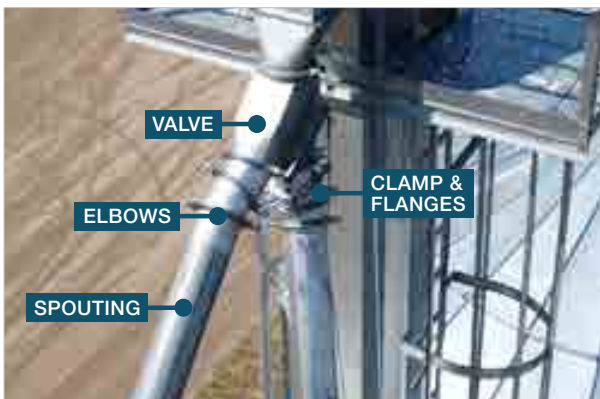
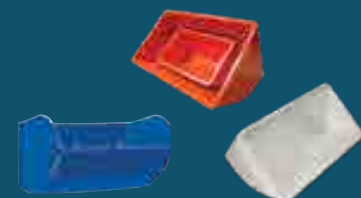
INLINE DRAG CONVEYORS



WALINGA PNEUMATIC CONVEYANCE SYSTEMS



Largest Supplier of Bucket Elevator Cups & Accessories in Western Canada



SPOUTING, ELBOWS, CLAMPS, FLANGES, VALVES, AND DISTRIBUTORS



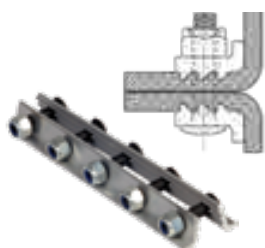
BELTING  
Available in 4" to 20"



SPACERS



NORWAY & FANGED BOLTS  
All bolts come with nuts



GRIPWELL SPLICERS



DURASPLICE FASTENER





# WALINGA ULTRA-VEYOR



All the working components on the ground!

## WALINGA BLOWER SYSTEM

**Move your grain safer and easier without elevator legs or portable augers**

- Economic and affordable solution for long distance conveyance
- Gentle on product (including chickpeas)
- Flexible system for future expansion and growth
- Simple and easy installation

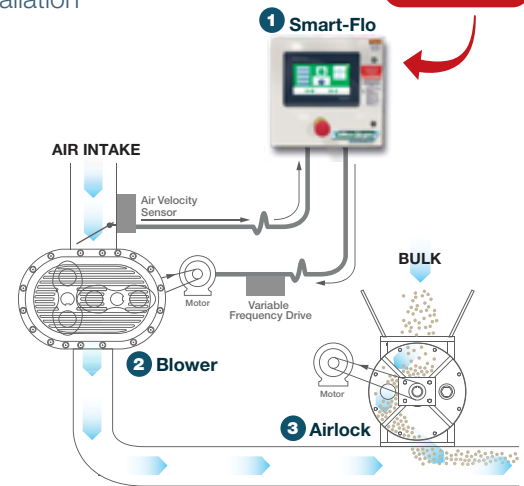
**New digital controls!**

**1 SMART-FLO**  
Variable Frequency Drive Systems monitor and automatically adjust motor speeds, optimizing performance while reducing energy costs and bulk damage.



### 2 SUPER HARDENED SRT BLOWER

Walinga blowers are fabricated from special alloy castings that facilitate hardening. This process eliminates premature wear from abrasive dust, ensuring a much longer life.



**3**



### AIRLOCK PACKAGE

Designed for maximum efficiency and minimal grain damage, the housing is precision machined from a cast iron shell for unequalled performance.

MODEL	TUBING	MOTOR	CAPACITY
5510	5"	15 – 40 HP	up to 1,600 bu/hr
6614	6"	40 – 75 HP	up to 2,300 bu/hr



# AGI HUTCHINSON

## CHAIN & PADDLE CONVEYORS

Available in 6", 8", 10", and 12"

AGI Hutchinson Chain and Paddle conveyors are more durable, gentle on product, and require less horsepower than an auger system.

- Moves up to 10,000 BPH
- 12 gauge galvanized tube housing
- Heavy-duty winch system
- Available in electric or PTO drives



PORTABLE GRAIN PUMP



GRAIN PUMP DOUBLE RUN



GRAIN PUMP LOOP



## U-TROUGH SCREW CONVEYORS

Versatile, custom conveying solution

Screw conveyors can be used in multiple configurations to move a wide range of materials.

- Conveyor sizes range from 6" to 24"
- Standard U-Trough design
- Thicker, long-lasting auger flighting
- Belt, chain, or direct drive configurations also available





## AGI STATIONARY AUGERS



ELECTRIC MOTOR DRIVE

### AGI WRX Electric Drive Auger

- Lengths from 31' to 76'
- 8" or 10" tube diameter
- 14 gauge powder coated tube



### DRIVE OPTIONS

- MD Motor Drive
- EMD Electric Motor Drive
- PTO-SD Shaft Drive
- PTO-BD Belt Drive
- Hydraulic Drive

### UTILITY AUGERS

**For semi-permanent or permanent grain handling installations**

Available sizes: 4", 6", 8", 10", 13"

### IDEAL USES

- At your grain bins or bulk tanks
- In drying set-ups
- Around the dairy barn
- In feedlots
- At feed mills or elevators

# WIRELESS GRAIN MONITORING

## BIN-SENSE LIVE

**Proactive reporting of your grain bin conditions on your smartphone**

- No power requirement – solar and battery powered
- Control fans remotely from phone or computer
- Temperature and/or moisture sensing
- Hourly grain temperature and moisture readings
- Compatible with most existing installed cables
- Monitor grain inventory levels by yard, bin, and grain type
- Custom text or email alerts

## BIN-SENSE SOLO

A low-cost solution for small to medium-sized grain bins, delivering daily grain storage information right to your mobile or desktop device.



## NEW BIN-SENSE PLUS

Featuring ambient air temperature and humidity readings, Bin-Sense Plus offers **automatic grain conditioning and aeration fan control for optimized grain quality.**

## MONITORING CABLES

**Sense temperature and moisture of stored grain**

Bin-Sense monitoring cables are designed for a variety of storage containers including flat bottom bins, hopper bottom bins, and grain elevators. Featuring an innovative swivel head, a centering flange for easy, accurate alignment, and roof bracket options for additional support.



## FAN CONTROLLER

**Control your fans remotely**

The Bin-Sense fan controller lets you turn bin fans on or off, or create a timer from your desktop or mobile device. Compatible with all single and three-phase aeration fans.



**Install, Support, and Service.**





# TRANSFER AUGERS & CONVEYORS



## PRO GRAIN T-180 Transfer Auger

An economical solution for transferring grain.

- 8" diameter, 10' long
- 6.5 HP Honda motor



## AGI Low-Profile Transfer Augers

Fits easily under hopper bins and trailers.

- 8" or 10" diameters
- 10 ¾" high
- Hydraulic, gas, or electric drive options



## AGI BATCO BCX² 1515 Low-Profile Transfer Conveyor

- 10" diameter
- Move up to 6,000 BPH
- Hydraulic, gas, or electric drive options



## CONVEY-ALL High-Capacity Transfer Conveyors

- Move up to 14,000 BPH
- 10" to 14" diameters and 12" to 22" belts
- Hydraulic, gas, or electric drive options



## AGI HUTCHINSON Drive-Over Chain Conveyor

Convenient, fast, and easy drive over and unloading.

- Low profile 8 ¾" unit
- Move up to 8,000 BPH
- 10 HP electric drive (hydraulic also available)



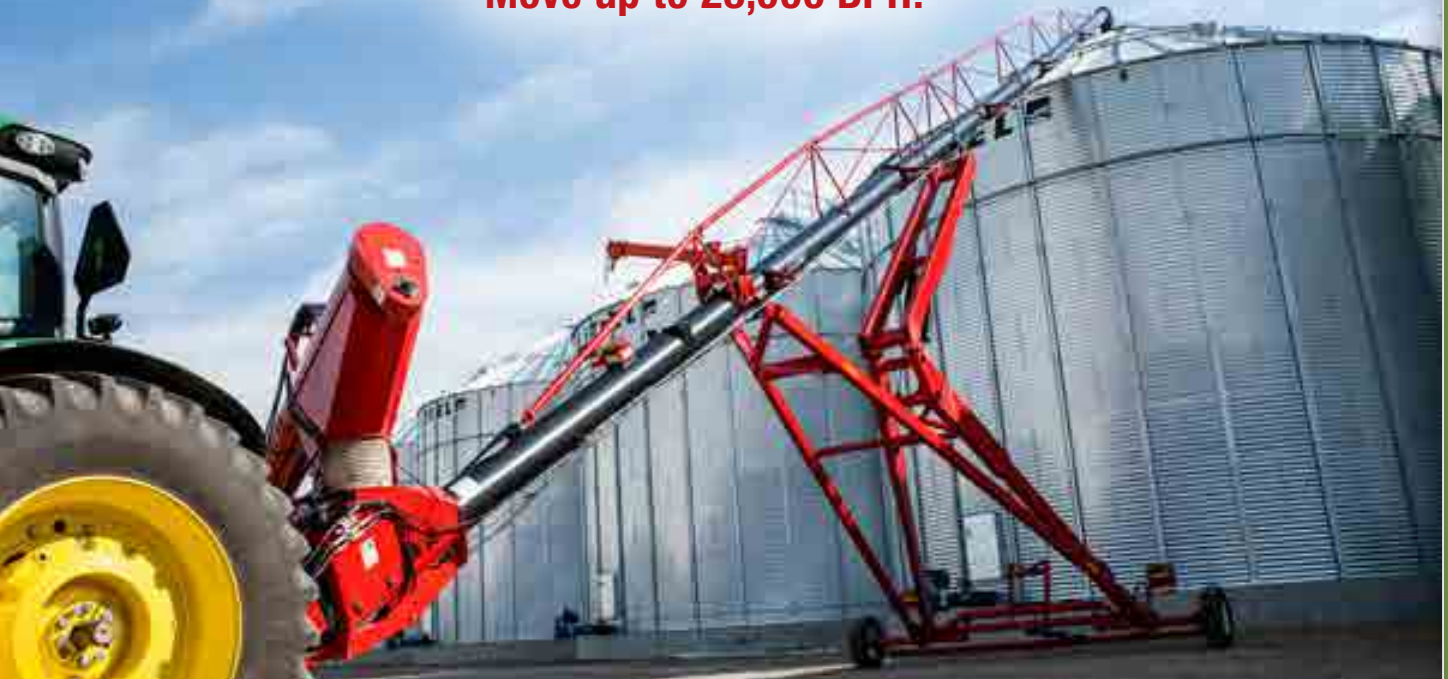
## AGI BATCO PITSTOP Portable Drive-Over Pit

Ideal for unloading semi trailers, gravity carts, and belly dump trailers.

- 1800 & 2400 Series
- Move up to 18,000 BPH
- Hydraulic, gas, or electric drive options

# AGI X<sup>2</sup> SERIES AUGERS

Move up to 23,000 BPH!



## AGI X<sup>2</sup> SERIES SWING AUGER

The redesigned AGI X<sup>2</sup> Series auger offers key updated features to provide fast and efficient grain transfer to your large bins.

### FEATURES

- 1000 RPM reducer/reverser
- Wireless electric power swing
- Hydraulic hopper winch
- Light kit

### KEY UPDATES

- Open discharge spout
- Durable boot
- Responsive steerable axles



### X-TEND OPTION

#### Move more with less horsepower

Featuring a **longer auger and a larger hopper** than competitive units, the X-Tend retracting swing auger offers the convenience of being able to **extend, move side-to-side, and retract**, without having to move or reposition the truck. Available on 13" & 16" models.



### DURABLE BOOT

Separate abrasion resistant (AR) boot flighting with removable shafts provides a longer lifespan and makes servicing easier.



### STEERABLE AXLE

The responsive steerable axle offers easy maneuvering around tight bin yards and corners. Optional on 13" model and standard on 16" model.

### X<sup>2</sup> 10 – 10" AUGER

Capacity up to 6,000 BPH

Lengths from 63' to 83'

Available with Power Swing

### X<sup>2</sup> 13 – 13" AUGER

Capacity up to 11,000 BPH

Lengths from 74' to 114'

Available with Power Swing or X-Tend

### X<sup>2</sup> 16 – 16" AUGER

Capacity up to 23,000 BPH

Lengths from 85' to 125'

Available with Power Swing or X-Tend



### DISCHARGE SPOUT

The new open discharge spout provides a more efficient flow, with lower HP requirements.



# AGI XTA AUGERS

Built for durability, longevity, and capacity.



**LED WORKING LIGHTS**



**ELECTRIC CLUTCH**



**DOUBLE BANDED BELTS**

Molded together for maximum strength and dependability, these double banded belts maintain speed by providing better tension with less slippage.

*To ensure optimal performance, the 10" models in 46' and 51' lengths use triple banded belts.*

## AGI XTA TRUCK AUGER

**Capacities up to 3,500 BPH (8" models) and 5,500 BPH (10" models)**

Featuring a self-propelled heavy-duty mover kit with all-wheel drive, hydraulic steering, and rugged all-terrain tires, the AGI XTA is a fast and convenient solution for loading grain.

### STANDARD FEATURES

- AGI mover kit
- Electric clutch
- Large fuel tank
- Reversing gearbox
- Light kit

### OPTIONS

- Heavy duty mover kit
- EFI engines available



**SELF-LEVELING MOTOR**

The heavy-duty, self-leveling motor mount maintains proper tension at all heights and is designed to handle high horsepower, heavy engines.



**HEAVY-DUTY MOVER KIT**

The narrow, compact design gives better access to larger diameter hopper bins and offers a sharper turning radius.

# AGI UTX AUGERS

## High-Capacity U-Trough Augers



## AGI UTX U-TROUGH AUGER

### Capacity up to 9,000 BPH

Built to withstand harsh physical demands, the high-capacity AGI UTX features a unique U-Trough design that reduces the chance of grain damage or plugging.

#### STANDARD FEATURES

- Collapsible spring-loaded hopper extension
- Reversing gearbox
- Heavy duty mover kit with joystick
- Triple groove electric clutch
- Large fuel tank
- Hydraulic winch



**HEAVY-DUTY MOVER KIT**

The narrow, compact design gives better access to larger diameter hopper bins and offers a sharper turning radius.



**REVERSING GEARBOX & ELECTRIC CLUTCH**

Start and stop the auger without shutting down the engine and safely reverse the auger at all angles with the reversing gearbox.



**VANGUARD 40 HP EFI**



**44-LITRE FUEL TANK**



**LED WORKING LIGHTS**



# EDGE AGRO AUGERS

## Self-Propelled Loading Augers



**HEAVY-DUTY MOVER KIT**



**GEARBOX & LED LIGHTING**



**TIER 4 HATZ TURBO  
DIESEL ENGINE**

Eliminates the need for a separate tank of gas, provides large-capacity fuel and oil storage, and has a circulating block heater for cold weather starts.

### **NEW**

## EDGE AGRO LOADING AUGER

**Long-lasting, easy-to-use, quiet, and efficient.**

Featuring a powerful Hatz diesel engine, dynamically balanced suspended flighting, and an integrated mechanical hand clutch, Edge Agro augers are designed for durability and longevity and offer capacities up to 12,000 BPH (12") and 14,000 BPH (14").

### **STANDARD FEATURES**

- 12" or 14" tubes / 42' long
- 56 HP Hatz diesel engine
- Engine coolant block heater
- Mechanical hand clutch
- Dynamically balanced suspended flighting
- Hanger bearings
- Double 60H chain drive
- Hydraulic lift
- Low profile hopper design
- Heavy-duty mover kit
- Light kit



**DYNAMICALLY BALANCED  
SUSPENDED FLIGHTING**

**Innovative hanger bearings** prevent metal-on-metal wear and vibration on the bearings – increases the auger's lifespan by up to 4x, runs quiet, and is gentle on grain.



**INTEGRATED MECHANICAL  
HAND CLUTCH**

Allows for gradual engagement when the auger's full of grain, can handle increased torque levels, and is gentle on the auger.

# MERIDIAN AUGERS

## Heavy-Duty Conventional and Swing Augers



### MERIDIAN HEAVY-DUTY AUGER

**A fast loading auger that puts safety first with its innovative design.**

The undercarriage/axle design results in better weight distribution and the self-leveling motor mount ensures consistent belt tension regardless of the height of the auger.

#### STANDARD FEATURES

- 8", 10", or 12" tubes
- Lengths from 39' to 59'
- Shovel and shovel holder
- Mover kit
- Reversible gearbox
- Winter kit
- Light kit



**REVERSIBLE GEARBOX**



**4 LIGHT KIT**



**SHOVEL & HOLDER**

### MERIDIAN SWING AWAY AUGER

**Perfect for low profile trailers and offers ample clearance in all unload applications.**

Meridian's new longer and wider hopper design maximizes reach, increases handling capacities, and reduces overflow and spillage.

#### STANDARD FEATURES

- 10" 12", 13", or 14" tube size
- Lengths from 72' to 115'
- Remote controlled electric swing
- Hydraulic winch
- Poly flex downspout
- Reverser and light kit



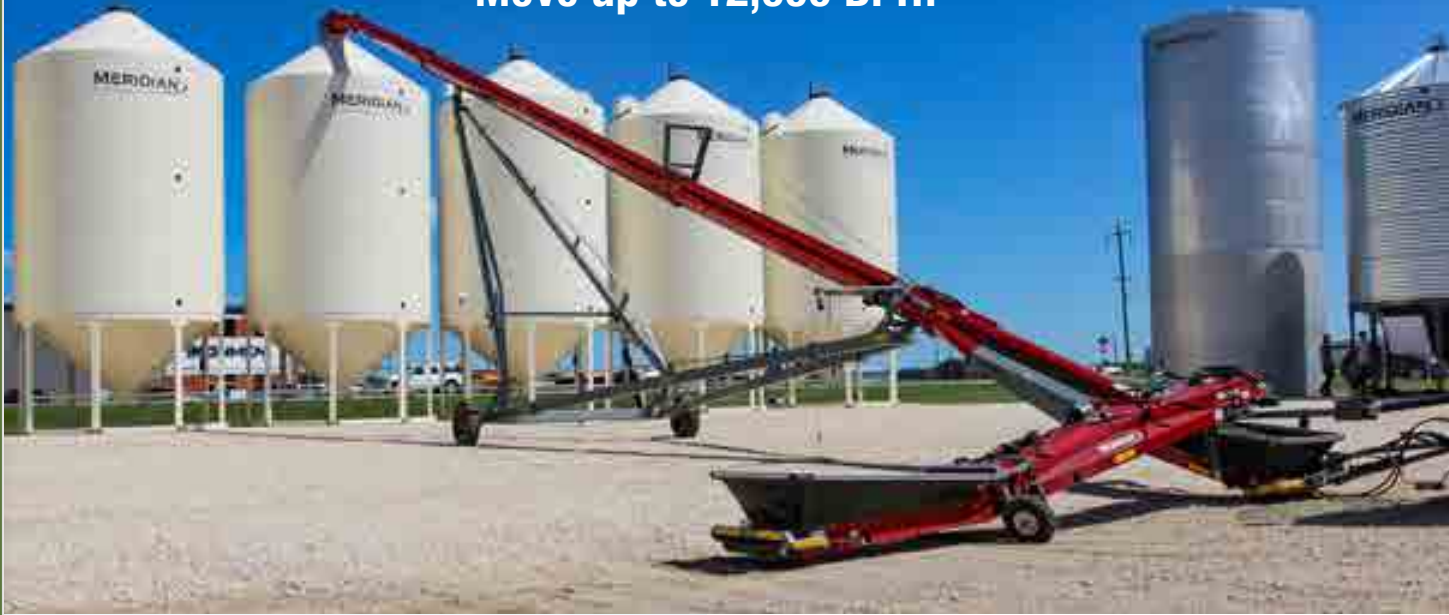
**Rodono Retracting Swing Option**  
Available on 13" and 14" units





# MERIDIAN CONVEYORS

Move up to 12,000 BPH!



**20" CHEVRON STYLE BELT**



**5' COLLAPSIBLE INTAKE HOPPER**



**ELECTRIC SWING MOVER**

## MERIDIAN RELIABELT SWING CONVEYOR

**Redefining efficiency with fast but gentle handling of your grains.**

Available in lengths of 90' to 120', Meridian Reliabelt swing conveyors feature a 20" wide chevron style belt in an enclosed 10" tube.

### STANDARD FEATURES

- Collapsible intake hopper
- Heavy duty undercarriage
- Round steel fixed spout
- 4-way hydraulic swinging hitch
- Hydraulic lift with quick couplers
- End PTO drive
- Electric swing mover
- Electric winch kit
- HD light kit

### OPTION

- 13" flexible downspout

# CONVEY-ALL CONVEYORS

## Truck Load and Swing Away Conveyors



### CONVEY-ALL TRUCK LOAD OILSEED SERIES CONVEYOR

**16" skived belt moves up to 7,900 BPH**

The 1650-TL & 1658-TL Oilseed Series have been upgraded to handle canola and hemp, without sacrificing capacity.

#### STANDARD FEATURES

- Collapsible hopper
- Skived chevron belt
- Oilseed Series scrapers
- Full length wind guards
- Heavy duty undercarriage
- Hydraulic lift
- Self-contained drive system
- Heavy duty mover kit
- Optional stainless steel ends for heavy fertilizer use



The addition of extra flashing and scrapers along the belt keeps the fine material on the belt and prevents build up.



### CONVEY-ALL BIN FILL CONVEYOR

**Remote controlled, 360° swing with an electric swing mover**

Convey-All swing away conveyors are available in lengths of 90' to 120' and can move up to 12,000 BPH.

#### STANDARD FEATURES

- 16" or 22" tube size
- Collapsible hopper
- Full length wind guards
- Heavy duty scissor lift undercarriage
- Hydraulic winch
- Positive pinch drive box
- Self-propelled diesel drive option also available

### CONVEY-ALL VOLT



Introducing the first battery powered ag conveyor! The brand-new **Convey-All 1650-TL VOLT** offers up to 2.5 hours of continuous run time and can handle all the same commodities as the standard 1650-TL.





# AGI BATCO BCX<sup>3</sup> FIELD LOADER



## AGI BATCO BELT CONVEYOR

**Save time and money with a high-capacity, low maintenance swing conveyor**

AGI Batco swing conveyors are available in lengths of 90' to 120' and can move up to 14,000 BPH.

### STANDARD FEATURES

- 15", 25" or 24" tube sizes
- Swing away kit
- Hydraulic winch kit
- Electric power swing kit
- Light kit

## AGI BATCO BCX<sup>3</sup> FIELD LOADER

**Move cereals, pulses, canola, and other oilseeds and fertilizers.**

The redesigned Batco BCX<sup>3</sup> field loader is equipped to handle tough jobs and confidently moves all commodities, reducing the need to have multiple portable handling solutions on your farm.

### STANDARD FEATURES

- 10" tube and 15" belt
- 33 HP Vanguard EFI engine
- Hydraulic steering
- Heavy duty mover kit
- Soft start electric clutch
- 32" wide hopper
- Light kit

### OPTIONS

- Under mount or top mount



**HEAVY DUTY IBEX MOVER KIT**



**BCX<sup>3</sup> TOP MOUNT**



**BCX<sup>3</sup> UNDER MOUNT**



## AGI BATCO UCX<sup>3</sup> CONVEYOR

### AGI BATCO UCX<sup>3</sup> U-TROUGH CONVEYOR Capacity up to 12,500 BPH

The unique U-Trough shape delivers high capacities without compromising the gentle handling of your commodity.

#### STANDARD FEATURES

- 10" U-Trough tube and 15" belt
- 40 HP Vanguard EFI engine
- Hydraulic steering
- Triple belt electric clutch
- Redesigned hopper
- Light kit

#### IBEX MOVER KIT

- Built-in braking system
- Better traction
- 160° turning radius
- Drop-and-go wheel move
- Ergonomic controls

#### ALL FARM COMMODITY SYSTEM

Both the BCX<sup>3</sup> and UCX<sup>3</sup> feature a belt brush, two belt scrapers, and the turbo clean wash system, designed to keep debris off your belt and make clean-out easier than ever.



TURBO CLEAN WASH SYSTEM



BELT SCRAPER



IBEX MOVER KIT



HYDRAULIC SYSTEM



MOTOR & UPGRADED  
DRIVE COMPONENTS



# AERATION SOLUTIONS

We offer a wide range of fans, heaters, and aeration systems.



FULL CENTRIFUGAL FAN



TURBO FAN



INLINE FAN

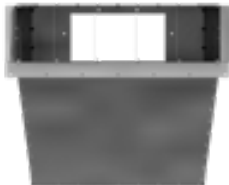


TRANSITIONS

Sizes available: 18", 24", and 28"

## GRAIN GUARD TRANSITIONS AND ADAPTERS

Easily adapt aeration fans and heaters to multiple aeration systems.



## AERATION FANS

3 Year Warranty and CSA Approved

### FULL CENTRIFUGAL FAN

3 HP – 10HP

- Suited for Grain Guard Rocket
- Maximum airflow at higher static pressures
- 20% more air flow than an in-line fan
- Call about 3 phase options

### INLINE FAN

3 HP – 15 HP

- Suited for round duct, 1/2 round systems
- Call about 3 phase options

### TURBO FAN

7.5 HP

- Suited for round duct, 1/2 round systems
- Excellent airflow at higher static pressures
- 20% more air flow than an in-line fan
- 3 phase not available

Limited quantities of 3 HP & 5 HP turbo fans available in Alberta



### CROSS DUCT

Easily retrofits into existing flat floor bins on wood or cement floor. Fully expandable and great for quonsets.

Available in Alberta only



FAN COVERS

Protect your fans from the elements



SHOWER CAP



CANVAS AIR SOCKS



FAN CLAMPS

Easily move your fans from bin to bin

# GRAIN GUARD Aeration Systems



## NEXT GENERATION ROCKET

**Designed for hopper bins**

Provides more air delivery to the centre of the bin where air is most difficult to move.

Internal support rings provide greater structural strength to withstand increased side loads.



Easy, two person "do-it-yourself" installation

## RETRO ROCKET

**Retrofit existing bins**

Increase fan efficiency while delivering air to the core of your bin.

This rocket system lets you quickly and easily retrofit existing hopper bottom and smoothwall bins with Grain Guard aeration.

**MAX. 5 HP FAN FOR  
4' RETRO ROCKET  
UP TO 5,000 BU**

**MAX. 7 HP FAN FOR  
6' RETRO ROCKET  
UP TO 7,000 BU**

**SIZES FOR BINS  
UP TO 25,000 BU**



## HELPER SYSTEM

**An economical alternative to full floor aeration**

Increases air flow and can be installed in any diameter bin.

*Available in Alberta only*



## HIGH TEMPERATURE DOWNSTREAM HEATER

**200,000 – 700,000 BTU**

Increases temperature while decreasing humidity.

*Available in Alberta only*



## BIN ANCHORS

**4" x 43"  
6 x 43" HD  
6 x 60" HD**

Secure flat bottom bins or hopper bins that are mounted on a steel floor or steel skid foundation.



## STRAIGHT DUCT

**Replace older corrugated pipe**

18" & 24" models available that can be made to any length.

## LOW TEMPERATURE DOWNSTREAM HEATERS

**60,000 – 200,000 BTU**

Designed to supplement natural air drying systems.

*Available in Alberta only*







Available at all  
**FLAMAN** locations

### AUGER HOG

**Increase your auger capacity by 20–30%**

The only adjustable, detachable grain auger hopper for your load out grain auger that supercharges auger capacity and totally eliminates grain spitting, spraying, and overflowing.



AVAILABLE FOR  
8/10" AND 12/13"  
AUGERS

*Optional fertilizer screen  
available*

**TRY THE  
AUGER HOG  
RISK-FREE.**

*We offer a full refund  
within 30 days*



**STOP YOUR GRAIN  
FROM HEATING**

### GRAINAIR TUBE

**Maximize existing aeration  
systems by increasing airflow  
with an aeration booster.**

- GrainAir Tube systems remove heat from your grain using natural convection
- Allows heat and moisture to escape the bin quickly
- Can be used to cool flat and hopper bottom bins, sheds, quonsets, and grain piles

### VENT-A-LID

**A specially designed  
ventilation tool**

Creates ventilation at the highest point of your bin, where heat naturally wants to flow.



*Vent-a-lid allows  
your bin lid to  
be fully closed  
without worry*

### CROSSFLOW AERATION

**High performance aeration**

**INVENTORY  
CLEAROUT**

Gatco CrossFlow Aeration moves air horizontally from the louvered wall columns on the bin wall to the centre of the bin where it is exhausted with a perforated grain air tube.



*Retrofittable to any size and type of bin*

**3 IN 1 AERATION: DRYING, COOLING &  
NATURAL CONVECTION ONCE FAN IS SHUT OFF**

**Innovative & Effective Solutions for Your Farm**

**[www.gatcomfg.com](http://www.gatcomfg.com)**

# AUGER & BIN ACCESSORIES

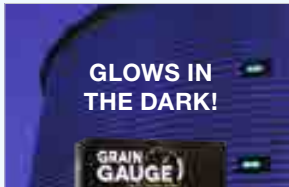
## BIN LEVEL INDICATORS



**Lev ALERT**  
Bin Level Indicator  
Sidewall mount



**Saf-T-Fill**  
Bin Level Indicator



**Grain Gauge**  
Bin Level Indicator

## POLY AUGER HOPPERS



**Standard Auger Hopper**



**Big Daddy Hopper**



**8" and 10" Agri-Hopper**



**The Big Boot**

## DOWNSPOUTS

### Poly Auger Downspouts

- 8" Round
- 10" Round
- 10" Oval
- 13" Round



### No Snag Auger Downspout

*Directs grain right into the bin without snagging.*

- 10" No Snag
- 13" No Snag
- 16" No Snag

*Colour varies by province*



### Never Spill Auger Downspout

*No checking, no overfilling, no plugging augers!*

- 10" w/ alarm
- 13" w/ alarm
- 16" w/ alarm



**ALARM SYSTEM INDICATES A FULL BIN**

## AUGER LIGHT OPTIONS

3 light kits or LED light kits



**43-LITRE FUEL TANK**



## MAGNETIC BIN LABELS

Organize your bin yard with magnetic bin labels. Bin labels are available for over 30 commodities. Numbers are also available.



## SHOVEL HOLDER



## REPLACEMENT BIN LIDS

Retrofit your older bins with a remote lid opener. One size fits all 36" bin lid.



## HOPPER DROPPER

Spill-Proof Canvas Hopper Bag





5200-FARM  
Designed for on-farm use



## GRAIN ANALYSIS

Gain the advantage of knowing what your grain has to offer before sending it to market.



### PERTEN AM 5200 GRAIN MOISTURE METER

Test high temperature grain straight off the dryer

Utilizing UGMA technology, the Perten AM 5200 provides an accurate and repeatable analysis regardless of temperature or crop type. This unit displays moisture, test weight, and temperature in 10 seconds (5200-A) and 25 seconds (5200-Farm).



### PERTEN IM 8800 GRAIN PROTEIN TESTER

Light and compact for fast, portable grain testing

The Perten IM 8800 is a portable, near-infrared (NIR) grain analyzer designed specifically for on-farm conditions and displays moisture, protein, and oil content in just 90 seconds.

Equipped with GPS capability for protein field mapping.



### PERTEN IM 9500 GRAIN PROTEIN TESTER

Commercial grain protein and moisture analyzer

Reliable, robust, and built to meet the requirements of commercial grain handling operations, the Perten IM 9500 displays moisture, protein, and oil content in less than 30 seconds.

Optional test weight module is available.



### LABTRONICS 919 GRAIN MOISTURE TESTER

Portable unit designed for on-farm use

Comes as a complete kit with a digital scale, Celsius thermometer, and set of charts.

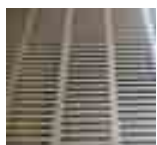
For more information about Perten products, please call our Grain Systems division located in Saskatchewan.

**587.206.8356**



# CUSTOM SCREENS

Shipping available to anywhere  
in North America!



SLOTTED  
SCREEN

## SCREEN TYPES

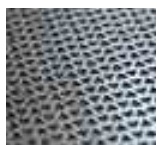
- ▶ Round Hole, Slotted, Double Cut Triangle
- ▶ Special Order: Wire Mesh, Stainless Steel Material, Stop Perforated, Bulk Perforated



ROUND  
HOLE  
SCREEN

## WOOD & ALUMINUM FRAMES

- ▶ Bench, Clipper, Crippen, Garratt, Northland, Superior, Westrup, Cimbria, BM & M, Forever, Gjesdal, and custom built to your specifications



DOUBLE CUT  
TRIANGLE  
BUCKWHEAT

## 36" WIDE SHEETS

- ▶ 4/64 – 32/64 Round Hole Screen sq. ft.
- ▶ 4/64 – 14/64 Slotted Screen sq. ft.

## 48" WIDE SHEETS

- ▶ 4/64 – 32/64 Round Hole Screen sq. ft.
- ▶ 3/64 – 16/64 Slotted Screen sq. ft.
- ▶ Buckwheat Screen sq. ft.

## HAND SIEVES

- ▶ Durable hand sieves designed for excessive use in tough environments
- ▶ Many sizes available



## WOOD HAND TESTERS

- ▶ Economical hand tester kits
- ▶ Changeable screen inserts available
- ▶ Assorted kits available



Grader shells, scalper reels, and indent shells available.

SCREENS ARE AVAILABLE FOR ALMOST ANY  
MAKE OR MODEL CLEANER

## SUGGESTED SCREEN SIZES FOR VARIOUS COMMODITIES



**SPRING WHEAT** Scalping: 12-14/64 round hole  
Sifting: 5.5-6/64 slot



**DURUM WHEAT** Scalping: 15-16/64 round hole  
Sifting: 5.5-6/64 slot



**RYE** Scalping: 12-13 round hole  
Sifting: 5-5.5 slot



**BARLEY** Scalping: 16-18/64 round hole  
Scalping: 10-12/64 slot  
Sifting: 5.5-6/64 slot



**OAT** Scalping: 18-20/64 round hole  
Scalping: 9-10/64 slot  
Sifting: 5-6/64 slot



**ESTON LENTILS** Scalping: 15-16/64 round hole  
Sifting: 8-10/64 round hole (fines)  
Sifting: 5/64 slot (splits)



**LAIRD LENTILS** Scalping: 18-22/64 round hole  
Sifting: 12-13/64 round hole  
Sifting: 5/64 slot (splits)



**FLAX** Scalping: 3.5-4.5/64 slot or  
4x14 wire mesh  
Sifting: 5.5/64 round hole



**CANARY SEED** Scalping: 5/64 slot  
Sifting: 4.5-5/64 round hole  
Sifting: 3/64 slot



**PEAS** Scalping: 20-24/64 round hole  
Sifting: 10-14/64 slot



**CHICKPEAS** Scalping: 26-32/64 round hole  
Sifting: 12-16/64 slot



**SOY BEANS** Scalping: 20/64 round hole  
Sifting: 10/64 slot



**KIDNEY BEANS** Scalping: 28/64 round hole  
Sifting: 14/64 slot



**CORN** Scalping: 26-28 round hole  
Sifting: 16-18 round hole



**ALFALFA** Scalping: 4.5/64 round hole  
Sifting: 6x22 or 24 wire



**CANOLA** Scalping: 6.5-8/64 round hole  
Sifting: 3-3.5/64 slot



**MUSTARD** Scalping: 6-8/64 round hole  
Sifting: 3.5-4/64 slot



**HEMP** Scalping: 12-14 round hole  
Sifting: 5.5-6 slot



# GRAIN CLEANERS

## KWIK KLEEN GRAIN CLEANERS

**Remove dockage and reduce the chance of overheating by pre-cleaning your grain before shipping or storing it.**

### FEATURES

- Used for sizing barley and removing small seeds and other dockage
- Easily removable screens
- More than 20 screen sizes available
- Quick and easy clean out
- Available with electric or hydraulic drive

HYDRAULIC 772 MODEL



HYDRAULIC 572 MODEL

MODEL	DIMENSIONS	NUMBER OF AUGERS	CAPACITY	DRIVE	TUBES	SCREENING AUGER
572	108" x 58"	5 x 72"	7"– 8" Auger	12–13 GPM or 5 HP	5	4"
772	108" x 72"	7 x 72"	10" Auger	14–15 GPM or 7.5 HP	7	4"

## GCS GRAIN CLEANERS

**Gentle, fan powered grain cleaning**

### FEATURES

- No screens required
- Simple to run
- Low energy consumption
- Low initial cost
- Easy transition between different types of crops



GCS 450

### GCS SCALPER

- High-capacity and cost-effective
- Removes large dockage at up to 1,000 BPH
- Comes with three screens



### GCS 600 DOUBLE SHOE

- Scalps and sifts
- Two separations in one pass
- Comes with six screens



MODEL	GCS 200	GCS 450	GCS 600 DOUBLE SHOE	GCS 750	GCS 1000	GCS 1000 SCALPER	GCS 1400	GCS 2200
Capacity	200 BPH	450 BPH	600 BPH	750 BPH	1,000 BPH	1,000 BPH	1,400 BPH	2,200 BPH
Motor	3/4 HP	1.5 HP	1/3 HP	2 x 3 HP	2 x 1.5 HP	1/3 HP	2 x 5 HP	3 x 1.5 HP
Dimensions (L x W x H)	81"x19"x90"	94"x30"x 94"	79"x62"x68"	71"x47"x95"	94"x51"x94"	79"x56"x94"	91"x55"x95"	95"x74"x108"
Weight	400 lbs	800 lbs	700 lbs	1,600 lbs	1,800 lbs	500 lbs	1,900 lbs	2,500 lbs

# BENCH AIR & SCREEN GRAIN CLEANERS

**Gentle feeder will not damage your crops**

**CUSTOM AND  
SPECIALTY UNITS  
AVAILABLE**

## FEATURES

- An affordable way to clean your grain
- Large cleaning deck with a gentle vibratory feeder for accurate air separation
- Low horsepower requirements
- Designed for durability and accuracy
- Easy to change screens



BENCH 54108 MOBILE UNIT

For more information about grain cleaning solutions, please call our Grain Systems division in Saskatchewan.  
**587.206.8356**



BENCH MARKET



BENCH FULL SIZE



BENCH MID-SIZE



BENCH MINI

MODEL	MARKET	54108	DOUBLE SHOE	FULL SIZE	MID SIZE	MINI
Capacity	1,500 BPH <i>dockage removal</i>	500 BPH <i>for wheat</i>	500 BPH <i>for cereals</i>	300 BPH <i>for cereals</i>	100 BPH <i>for cereals</i>	30 BPH <i>for cereals</i>
Screen Size	54" x 36" (6)	54" x 36" (9)	54" x 36" (12)	54" x 36" (6)	36" x 54" (2)	27" x 36" (2)
Deck Size	54" x 108"	54" x 108"	54" x 72"	54" X 72"	36" x 54"	27" x 36"
Horsepower	5 HP on Fan 2 HP on Shoe	7.5 HP on Fan 3 HP on Shoe	10 HP on Fan 3 HP on Shoe	5 HP on Fan 2 HP on Shoe	3 HP on Fan 1 HP on Shoe	2 HP on Fan 1/2 HP on Shoe
Width	Please call	Please call	8' 1"	6' 8"	4'	3'
Height	Please call	Please call	8'	5' 6"	4' 10"	4'
Weight	Please call	Please call	4,500 lbs	2,400 lbs	1,780 lbs	580 lbs



# AGI GRAIN VACS

Quiet, fast, and easy to use.



MODEL	VRX
Capacity	6,000 BPH
HP	85
Weight	2,950 lbs



MODEL	VR12
Capacity	10,000 BPH
HP	130
Weight	3,300 lbs

## AGI VRX & VR12 GRAIN VACS

**Sets the standard in efficiency, speed, and durability.**

By utilizing VR technology, these machines are able to get more capacity, while reducing noise, debris, and maintenance time.

### STANDARD FEATURES

- Drive shaft mounted on the outside for easy access
- Leak-proof cleanout doors can be opened without tools
- Fan lasts 25% longer than previous models
- Air throttle can manually adjust the suction to suit grain type
- Spring-loaded two flap air lock
- Chrome augers for increased durability and 1/4" thick spring-loaded chrome flighting
- Self-contained gearbox



### OPTIONAL VRX DUST COLLECTOR

Don't let a little dust get in your way of moving grain.

The optional VRX dust collector is easy to attach and gives you flexibility to collect or direct the debris.

# WALINGA GRAIN VACS

Designed for maximum performance.



MODEL	6614 DLX
Capacity	3,200 BPH
HP	110 to 130
Weight	3,014 lbs



MODEL	7614 DLX
Capacity	5,000 BPH
HP	130 to 150
Weight	3,302 lbs

## WALINGA AGRI-VACS

**Gives one person total grain-handling capability**

Walinga DLX models offer additional wear protection with pre-cleaner and a rhino lined receiver tank and boom cyclone.

### STANDARD FEATURES

- 6" and 7" PTO models
- Self-contained hydraulics
- Super hardened positive displacement blower
- Hose carrier
- Hydraulic boom rotation
- Hydraulic boom lift/lower
- Stainless steel hoses
- Rubber clean-up line
- Suction nozzle
- Dual inlets and fenders



### 3510 GAS Portable Self-Contained Clean Up Model

Features: 26.5 HP EFI engine, forklift pocket, portable steel discharge line, pneumatic tires, clean up line, and nozzle.

# PRO GRAIN EQUIPMENT BAGGERS

Store as much grain as you want for just pennies a bushel.



## PRO GRAIN B-1610

### Bag up to 24,000 BPH

Featuring a 16" auger, the Pro Grain B-1610 has the capability of bagging up to 24,000 bushels per hour. This 10' bagger offers two loading options: a hopper or an auger/conveyor inlet.

## PRO GRAIN B-2010H

### Bag bushels in a blink

The B-2010H is a 10' bagger with a hopper only option. The 20" auger allows for quick unloading of grain bags up to 32,000 bushels per hour.

**OPTIONAL ROLL TARP  
AVAILABLE ON BOTH MODELS**

Pro Grain baggers are an efficient and affordable alternative to hopper bin storage.

### STANDARD FEATURES

- Electric bag winch
- Brake pressure gauge
- Electric actuators
- Safety stairs and platform
- Control panel and hand wheel
- All-terrain tires

### LOADING OPTIONS

- 8' x 8' big mouth loading hopper
- Telescoping swing drive 14" transfer auger
- Telescoping swing drive, 24" conveyor



### PRO GRAIN T-1425 TRANSFER AUGER Works hand in hand with your grain bagger

An economical and efficient solution for transferring grain at up to 11,500 BPH.

- 14" diameter, 25' long
- 22 GPM @ 2200 PSI
- Hydraulic mover kit





# GRAIN EXTRACTORS

## TRIDEKON GRAIN BOSS EXTRACTOR

**Move up to 300 bushels per minute in all terrain, including mud and snow.**

The Tridekon Grain Boss increases productivity, maximizes efficiency, and minimizes downtime.

### FEATURES

- 360° rotating unload auger
- Pull through roller design
- Steerable drive wheels
- Quick set up and clean up
- 120 HP required
- 6 GPM @ 2000 PSI



STEERABLE  
REAR WHEELS



360° ROTATING  
AUGER



DIRECT DRIVE



12' BAG EXTENSION

## PRO GRAIN E-1610 EXTRACTOR

**Move up to 10,500 BPH**

The Pro Grain extractor delivers fast, dependable, and efficient grain transfer from your grain bags to your transport truck.

### FEATURES

- 16" auger
- Hydraulic flow controls
- 9" cross auger with continuous fighting
- 80 HP required
- 15 GPM @ 2,200 PSI
- 2 year limited warranty



HYDRAULIC  
FLOW CONTROLS



ADJUSTABLE  
SPOUT



9" CROSS AUGER



TRANSPORT LOCK



# GRAIN BAGS



## AGFLEX BAGS

### 7 layers of prime polymer

- 50% greater tear and puncture strength
- All-weather design: field tested and proven for use in North America's harsh winter climate as well as high heat situations
- 40% more resistant to "slumping"
- Guaranteed to withstand 24 months of ultraviolet exposure under normal circumstances
- Improved oxygen-limiting properties to protect silage and grains from spoilage



POPULAR SIZES	
BAG SIZE	BU
9 x 300	12,000
10 x 300	15,000
10 x 400	20,000
10 x 500	25,000
12 x 500	38,000

*Other sizes available by special order*

## UP NORTH BAGS

### Ideal for colder temperatures

- Store high-moisture grain long term, or short term before drying
- Made with superior resins and resin formulations
- 2x more resistant to punctures (hail damage)
- 3x more resistant to tears (pliable in cold weather)



PRO GRAIN R-5 BAG ROLLER

## PRO GRAIN BAG ROLLER

### Clean up used grain bags with ease

Featuring a hydraulic spear, high torque hydraulic drive motor, and hydraulic bale kick, the **Pro Grain R-5** rolls used grain bags into recycle-ready bales.



# J&M GRAIN CARTS

## Harvest Heavyweights

### COLOUR OPTIONS:

-  Green
-  Blue
-  Red
-  Black



### BULLET AUGER 875 to 1,500 bushels

with 18" or 20" diameter bullet auger



Reduce compaction with a J&M tracked cart. Track options are now also available for mid-sized grain carts.

## 32 SERIES

### X-Tended Reach Dual Auger Grain Carts

This high-capacity cart combines all the advantages of a front-folding, single auger design with the low profile of a dual auger grain cart.

MODEL	BU	UNLOAD TIME	AUGER SIZE
1432-22S	1,450	2.0 min	22"
2032-22	2,050	2.0 min	22"

\* Bushel capacity measured with #2 corn at 15% moisture content

\*\* Time varies with RPM and moisture content of grain



### J&M IFARM™ BY AGRIMATICS™

A single device plugs in to load cell junction box and via Bluetooth communicates scale info to either your cell phone or tablet.



STORAGE POSITION



FIELD POSITION



UNLOAD POSITION



## 12 & 22 SERIES

### X-Tended Reach J&M Grain Carts

The rigid upper auger has been extended for even greater outward, upward, and forward reach, all while folding diagonally along the front of the cart for compact storage.

MODEL	BU	UNLOAD TIME	AUGER SIZE
812-18S	875	1.8 min	18"
1012-20S	1,025	1.8 min	20"
1112-20S	1,150	1.9 min	20"
1222-20S	1,225	2.0 min	20"
1412-20S	1,375	2.3 min	20"
1522-20S	1,500	2.5 min	20"
1522-20T	1,500	2.5 min	20"

\* Bushel capacity measured with #2 corn at 15% moisture content

\*\* Time varies with RPM and moisture content of grain



### TELESCOPING CONTROL SPOUT

Extends in the outward position to maximize side reach and retracts when unloading in the downward position to maximize unloading height.

### RIGHT-SIDE AUGER X-Tended Reach Grain Cart

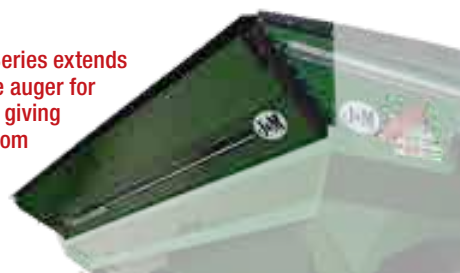
With the same features as the 12 Series X-tended reach models, the right-side auger design further increases operator visibility and unloading efficiency.



- Monitors, controls, and auger are all located on the right side of your tractor
- Reduce waste and increase safety in the field
- Available with either tires or tracks



The Leaner Tank Series extends towards the combine auger for an additional two feet, giving the operators more room to safely navigate.







# CONVEY-ALL SEED TENDERS



**WIRELESS REMOTE**



**SIX COMPARTMENTS WITH ROLL TARP**



**SIDE MOUNTED CONVEYOR**

## CONVEY-ALL CST-1550 COMMERCIAL SEED TENDER

### Take your seeding to the next level

The high-capacity Convey-All CST-1550 is designed to transport seed and fertilizer simultaneously without damage or cross-contamination and unloads at a rate of 2 tons per minute.

### STANDARD FEATURES

- Capacity of 1,250 bushels
- 6 compartments with roll tarp
- Stainless steel conveyor, slopes, and gate
- Self-contained hydraulics
- External ladders
- Tri-axle air ride trailer
- Wireless remote



TIER 4 KUBOTA  
DIESEL ENGINE



OPTIONAL  
SCALE KIT AVAILABLE



# CONVEY-ALL SEED CARTS

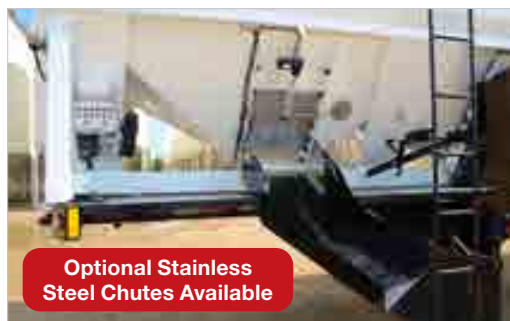
## CONVEY-ALL CST-1545 COMMERCIAL SEED CART

### High-volume seeding solution

Working with your existing conveyor, the Convey-All CSC-1545 seed cart features a side-drop chute system with stainless steel slopes and gates for quick, effortless unloading.

#### STANDARD FEATURES

- Capacity of 1,250 bushels
- 6 compartments with roll tarp
- Stainless steel slopes and gates
- Side drop chutes
- External ladder
- 2 sight glasses per compartment
- Tri-axle air ride trailer



Optional Stainless Steel Chutes Available

**SIDE DROP CHUTES**



**SIX COMPARTMENTS WITH ROLL TARP**



**OPTIONAL ELECTRIC GATE CONTROLS**



**OPTIONAL REMOTE CONTROL**



**SIGHT GLASSES**





## HAUL ALL SEED TENDERS



**40' TRIDEM CHASSIS TRAILER**



**LARGE CAPACITY**



**LARGE SIDE DRAW CHUTES**

### HAUL ALL INDUSTRIES SIDE DRAW SEED TENDER

#### Improve your seeding efficiency

A versatile and economical solution for bringing seed and fertilizer to the field in the spring and hauling your harvest back to the bins in the fall.

#### STANDARD FEATURES

- 4 hoppers
- Capacity of 1,260 bushels
- 40' tri-axle trailer
- Side draw chutes
- View glasses
- Manual roll tarp
- Ladders
- Crank handles

#### OPTIONS

- Electric gate kit
- Remote control
- Electric tarp
- Stainless steel gates and chute
- Epoxy paint coating
- LED lights package
- Mud flap/fenders package
- Aluminum rims
- Rock guard protection
- Catwalk



# HAUL ALL GRAIN TRAILERS

## **NEW** HAUL ALL INDUSTRIES 45' TRIDEM GRAIN TRAILER

**Built for heavy-duty work on the farm**

Tough, easy to operate, and field ready. The Haul All GT45 tri-axle grain trailer is loaded with features for rugged work on the farm.

### STANDARD FEATURES

- 33° front and rear hopper slopes
- 16" x 23" gate with 24" clearance
- Angled gate cranks
- Aluminum ladders, catwalks, and inner steps
- 24.5 steel rims and tires
- Full coverage mudflaps
- Interior epoxy paint for corrosion resistance
- Rock guard
- Sight glass windows
- Air ride suspension
- LED light package

### OPTIONS

- Electric roll tarp
- Side chutes
- Electric gate controls
- Dual side cranks
- Aluminum rims

**36' TANDEM GRAIN  
TRAILER MODEL ALSO  
AVAILABLE**



**CAPACITY OF 1,480 BUSHELS**



**SLANTED FENDERS**



**FRONT & REAR LADDER W/ PLATFORM**



# GRAIN WAGONS

An economical solution for moving grain.



OPTIONAL TWO COMPARTMENT DIVIDER AVAILABLE ON BOTH THE 400 AND 600 BUSHSEL MODELS



**MICHEL'S ROLL-UP TARP**

Superior quality Michel's Industries roll-up tarps are installed on all of our farm wagons.

## BRUNS GRAVITY WAGON

**Quality Canadian-made gravity bins**

Bruns grain wagons are made to high-quality standards and come with many features that make them versatile, durable, and easy to use.

### FEATURES

- 12 ton or 20 ton running gear
- Double sight windows
- Small door for easy access
- Interior bin ladder
- Roll-up tarp
- Easy climb external ladder
- Powder coated paint

### OPTIONS

- Available with scales
- LED lights
- Double compartment with centre divider
- Spring balancer



# LANDOLL WEATHERPROOFER

Manage residue and compaction.



## **NEW** LANDOLL WEATHERPROOFER

**Break up soil compaction and give your seed room to breathe, absorb, and grow.**

Featuring a combination of parabolic auto-reset shanks, tandem disc gangs, and a 3-bar tine and chopper reel, the new Landoll Weatherproofer improves soil tilth, accelerates residue breakdown, and maximizes water absorption in a single pass.

### **FEATURES**

- Available widths from 12' to 26'
- Fixed disc gangs
- Single-point depth control
- Auto-reset shanks
- 3-bar tine and chopper reel combo
- Adjustable front gauges
- Self-leveling hitch
- Heavy-duty scrapers
- Walking tandems
- Safety chain
- Safety warning lights

*Special Order in Alberta*



**AUTO-RESET SHANKS**



**FIXED DISC GANGS**



**3-BAR TINE & CHOPPER REEL**



# KELLO-BILT DISCS

**Hard News for Hard Soil**



MODEL 225 OFFSET DISC



MODEL 275 & 325 HEAVY  
OFFSET DISCS AVAILABLE



MODEL 225 TANDEM DISC

## KELLO-BILT DISCS

**Kello-Bilt. Flaman-Priced.  
Field Ready.**

Available cutting widths range from 10' to 16' (offset discs) and 23' to 38' (tandem discs).

### BENEFITS

- Heavy duty construction withstands acres of rough use
- Oil bath bearings feature back-to-back tapered roller bearings
- Durable, welded steel spacer spools that won't shatter or compress
- Gang shafts and end washers made of high carbon steel to eliminate stretch or premature failure
- Bearing standards and wear plates are built from 3/8" rectangular tubing for greater support and longevity
- Gang bar is fabricated as a single piece for maximum stability
- Heavy duty construction withstands acres of rough use
- Made in Canada



*Kello-Bilt discs come standard with notched disc blades*



*Optional wavy disc blades*



*Ideal for plowing down heavy residues and breaking up the compaction layers in your field*

# WISHEK HEAVY DISCS

The heaviest weight-per-blade in the agricultural industry.



## WISHEK BREAKING DISCS

10' to 38' widths available

Cutting widths range from 10' to 38'. You can also choose from various scraper options that are best suited for your field conditions.



Wishek discs come standard with smooth blades



Optional notched disc blades

### STANDARD FEATURES

- 30" smooth blades
- Spool and bearing scrapers
- Hydraulic leveler
- Single-point depth control
- Offset from 10' to 18'
- Tandem from 22' to 38'

### 842N OFFSET & 842NT TANDEM MODELS

- Spring cushioned gangs
- 11" blade spacing
- Truck tires
- Approximately 1,000 lbs/ft

**Special Order**

### MODEL Y2000

From its massive frame to its 36" blades, the Y2000 disc is designed to withstand the tough conditions of the construction industry.



These heavy-duty machines work in almost all soil conditions and crop residue.



# KINZE MACH TILL

**Heavyweight Power. High Field Speed. Low Maintenance.**



*Maintenance-free double-sealed bearings, carbide roller scrapers, composite bushings, and oversized pins provide many acres of low maintenance operation.*



**DOUBLE-SEALED BEARINGS**



**COMPOSITE BUSHINGS**



**OVERSIZED PINS**

## KINZE MACH TILL 20' to 41' widths available

The Kinze Mach Till is a heavy-duty, low maintenance high-speed disc that prepares seed beds in the spring and incorporates residue in the fall.

### STANDARD FEATURES

- Available sizes from 20' to 41'
- 22' double-V disc blades
- Rubber packers with Maxlite scrapers
- Right and left hand gauge wheels

### BENEFITS

- Operates at high speeds without creating compaction
- Covers up to 60 acres per hour for improved productivity
- Nutrient cycling, improved water infiltration, and reduced erosion
- Narrow machine width for safe and easy transport from field to field
- One tool for spring and fall

*Disc depth is hydraulically controlled by rear rollers or transport tires.*



**LARGE FLOTATION TIRES**



**RUBBER ROLLERS WITH HD SCRAPERS**



**TRANSPORT LIGHT KIT & HYDRAULIC HITCH JACK**



# BRILLION DISC RIPPERS

Break up hardpan and compaction layers.



## BRILLION DISC RIPPER

Available with 5 to 16 shanks

Built to handle the stresses of deep ripping in hard, compacted soil, Brillion disc rippers effectively shatter hardpan, improve moisture retention, and enhance root development.

### STANDARD FEATURES

- Straight leg or parabolic shanks
- Hydraulic or spring auto-reset
- Deep ripping up to 20"
- 22" pre-cut smooth coulters blades
- Tow caddy for easy transport
- Heavy-duty steel frame
- LED warning lights



HEAVY-DUTY FRAME



SMOOTH COULTER BLADES



PARABOLIC SHANKS WITH HYDRAULIC TRIP

STRAIGHT LEG SHANKS WITH SPRING TRIP



DEEP RIPPING SHANKS



# RITWAYWAY LAND ROLLERS

The heaviest rollers on the market.



## F-3 SERIES

### 3 Section Roller

32' to 52' widths  
 17,640 to 24,400 lbs  
 F3-NT narrow transport model available (12')  
 Heavy roller option

## F-5 SERIES

### 5 Section Roller

46' to 84' widths  
 23,000 to 40,320 lbs  
 Wing tire bar  
 Heavy roller option

## F-7 SERIES

### 7 Section Roller

65' to 89' widths  
 32,500 to 41,190 lbs  
 Wing tire bar

## RITWAYWAY LAND ROLLERS

### Large 42" diameter drum

Riteway land rollers apply uniform weight and consistent surface contact across your field, providing even germination, faster spraying, robust crops, and a trouble-free harvest.

### STANDARD FEATURES

- 32' to 89' widths available
- Forward unfolding system
- Taper lock replaceable drum shaft
- Auto-fold hydraulic wing lock
- Heavy-duty frame
- Safety chains and light package
- 14' transport width

### HEAVY ROLLER OPTION

#### Comes standard up to 62'

- 17.5 tire upgrade
- 5/8" drum thickness



LARGE DIAMETER DRUMS



The forward unfolding system goes from transport mode to field mode in minutes.



The shorter drum sections float independently, ensuring you roll every inch of your land evenly.

# RITEWAY HARROWS

Made to work. Built to last.



## RITEWAY HARROWS

### Clear the way for worry-free seeding

Spread and break up trash and residue, while raking and leveling the ground to provide optimal seeding conditions.

#### STANDARD FEATURES

- Hydraulically controlled tine angle
- High wear tines
- Auto-fold hydraulic pivot wheel
- Parallel linkage system (5 & 7-bar)
- Solid pull draft arm
- Adjustable hitch height
- Heavy-duty frame
- Safety chains and light package

#### OPTIONS

- Valmar applicators



7-BAR HARROW



5-BAR HEAVY HARROW



ROTARY HARROW

#### 7200 SERIES 7-Bar Mid Harrow

58' to 82' wide  
14' 9" transport width  
1/2" x 24" tines with high wear tips

#### 8200 SERIES 5-Bar Heavy Harrow

55' to 90' widths  
14' 7" transport width  
9/16" or 5/8" x 28" tines with high wear tips

#### 8200-NT SERIES Narrow Transport

40' to 73' widths  
9' 2" transport width

#### RH 9200 SERIES Rotary Harrow

22' to 75' wide  
13' 8" transport width  
3/4" x 18" interlocking, quick adjustment tines



# SCHULTE DISC HARROW



Optional Valmar Kit Available



## SCHULTE SOILSTAR DISC HARROW

**Heavy-duty, all-inclusive field prep**

Help manage increased straw residue, quicken soil warming, and increase water penetration. The Schulte DHX is the evolution of the heavy harrow, providing the next level of performance for post harvest and pre-seeding.

MODEL	DHX-360	DHX-600
Working Width	36'	60'
Weight	25,000 lbs	32,000 lbs
Number of Sections	3	5
Size of Discs	18"	18"
Disc Spacing	7.2"	7.2"
Disc Angle	4° fixed	4° fixed
Harrow Tines	5/8" x 26"	5/8" x 26"

### STANDARD FEATURES

- Double row of wavy coulters
- Five bar heavy harrow
- Hydraulic lock for wing tension links
- Single point depth control
- Steerable wing wheels



The steerable wing wheels allow the DHX to easily go in or out of transport mode.



Featuring a **double row of wavy coulters** followed by a **five bar heavy harrow** to efficiently chop straw and mix residue with the ground while spreading and leveling.

# DUTCH BIOSPREADER

## Bringing heavy duty to the next level.

Special Order in Saskatchewan & Manitoba



*Longer, well balanced hitch provides tighter turning radius in corrals and restricted spaces.*

Dutch Industries Ltd. designed a manure spreader addressing producer's biggest challenges: affordability, load capacity, ease of use, maintenance, maneuverability, spread consistency, and uniformity.



### SMOOTHER RIDE

*Rugged tandem walking beam axle delivers smoother ride, less compaction, and better flotation over tough terrain.*

## DUTCH INDUSTRIES BIOSPREADER PTX

### Engineered for any size operation

The Biospreader PTX is built with hardened steel to prevent sagging and deformity over extended use. The three adjustable paddles at the bottom of each beater allow large objects to pass through without permanent damage to the beater flighting.

### STANDARD FEATURES

- 1000 PTO
- Tandem axles
- Side extensions
- Light kit

MODEL	7020 PTX	8020 PTX
Capacity (Bushels)	434 BU	540 BU
Capacity (Cubic ft.)	540 ft <sup>3</sup>	672 ft <sup>3</sup>
Axles	Tandem	Tandem
Length	325"	355"
Width	127"	128"
Loading Height	76"	79"
HP Requirements	150 HP	200 HP



### EASIER LOADING

*Lower profile creates a reduced loading height and allows for skid steer loading.*



### MAX CAPACITY

*12-21 ton achievable with the addition or removal of side extensions.*



### HEAVY DUTY

*Heavier gauge steel and robust construction for more durability.*





**XH-1500 SERIES 5**

# SCHULTE ROTARY CUTTERS

## COMMERCIAL SERIES XH-1500 SERIES 5

**More heavy-duty and up to 30–40% faster than the Series 4 model.**

### FEATURES

- 15' cutting width
- Heavy-duty drive system
- Tandem walking axles
- Deck protection rings
- Safety light kit

### UPDATED

- Reinforced gearbox
- Increased blade tip speeds
- Increased ground clearance

**OTHER CUTTERS AVAILABLE UP TO 42'**



## FARM SERIES FX-318

**Designed for farm and ranch cutting**

- 18' cutting width
- Narrow transport width of only 93"
- Flex wing design contours to any terrain
- Three cutting rotors with super suction blades



### OPTIONAL FLX-1510 FLEX ARM

The Schulte FLX-1510 flex arm allows the operator to travel on the road while the rotary mower cuts the ditch slope, improving visibility and safety.

### New 13' Model



## FARM SERIES GX-130 & GX-150

**Economical cutting solution**

- 13' & 15' cutting widths
- Narrow transport width of only 93"
- Flex wing design contours to any terrain
- Three cutting rotors with super suction blades

# ROTARY CUTTERS

## **NEW** IRONCRAFT ROTARY CUTTERS

Handle weeds, grass, and brush with ease.



*Available in Alberta only*

### **1200 SERIES** Standard Duty

4' to 6' widths  
15 to 65 HP  
Shear pin PTO

### **1600 SERIES** Heavy Duty

6' and 7' widths  
45 to 100 HP  
Slip clutch PTO

### **300 SERIES** Medium Duty

5' and 6' widths  
30 to 85 HP  
Slip clutch PTO

### **1600 SERIES** Dual Spindle

8' and 10' widths  
3-point and pull type options  
60 to 100 HP

## **NEW** BRABER EQUIPMENT ROUGH CUT & FINISHING MOWERS 3-Point Hitch Rotary Cutters

### **ROUGH CUT MOWERS** Standard Duty

48" to 72" widths  
Shear pin PTO  
50 HP gearbox rating



### **ROUGH CUT MOWERS** Heavy Duty

72" to 84" widths  
Slip clutch PTO  
70 HP gearbox rating



### **FINISHING MOWERS** Heavy Duty

48" to 96" widths  
540 PTO  
20 HP to 45 HP rating

*Available in Saskatchewan & Manitoba only*





**GIANT 2500**

# SCHULTE ROCK REMOVAL



Proven  
**RENTAL  
TOUGH**

## RS-320 JUMBO ROCK PICKER

2x capacity of an average picker

- Large 3.2 cubic yard hopper
- Removes 2" to 28" surface rocks
- Durable grate eliminates jamming and lets soil sift through



## TITAN ROCK PICKER

- Huge 5 cubic yard bucket
- 6.5 foot tall dump height for larger piles and truck loading
- Super wide 7' grate with wide or narrow spacing options



## HIGH RISE 8000 ROCK PICKER

- Durable grate eliminates jamming and lets soil sift through
- Build larger stone piles or dump directly into tandem truck



## GIANT 2500 ROCK PICKER

Features a 60" picking width

- Picks 2" to 27" rocks
- Large 2.5 cubic yard hopper
- Durable T-iron grate with 1½" spacing



## SMR-800 SKID STEER MULTI RAKE WINDROWER

- 6' and 8' sizes
- The perfect tool for your skid steer



## SRW-1000 & SRW-1400 ROCK WINDROWERS

- Windrows 2" to 25" rocks into uniform rows
- 10' or 14' drum width
- Optional ditch gravel reclamation high speed sprocket

# SNOW BLOWERS



## SCHULTE RDX-117 117" 3-Point Hitch Snow Blower

Features a hydraulic chute and deflector and a rotating drum to eject snow out the side or top chute



## SCHULTE SBX 87" Skid Steer Snow Blower

Includes mounting plate, harness, and hydraulic valve block



## SCHULTE FM-350 Mount your snowblower on the front!

Moves PTO and 3PT from the back to the front for improved visibility and ergonomics



## SCHULTE SDX-102 & SDX-117 3-Point Hitch Snow Blowers

- SDX-102 Model: 102" / 500 PTO
- SDX-117 Model: 117" / 1000 PTO gear-driven
- Heavily reinforced bottom auger ensures snow and ice are fed into the fan with ease
- 300° rotating chute mitigates chute freeze up
- Double deflector design reduces snow blow back

## BRABER EQUIPMENT 3-Point Hitch Snow Blowers

- Sizes range from 60" to 88"
- Cat I, three-point hitch
- Heavy duty adjustable skid shoes
- Manual adjustable chute deflector
- Removable side extensions
- Removable telescoping hitch
- 24" impeller with 5" paddles
- Manual 340° chute



**OPTIONAL HYDRAULIC CHUTE ROTATION ON SOME MODELS**

*Available in Saskatchewan & Manitoba only*



# S.HOULE BOX SCRAPER

Level any surface from gravel roads to fields.



## HLL Series Box Scraper

### FEATURES

- 8', 10', and 12' widths available
- 30" blade height
- 40 to 110 HP

### OPTIONS

- Left or right hand tilt
- Scarifying teeth
- Light kit
- GPS mast



**NEW**

## ICON PULL GRADER

Level fields, grade roads, remove snow, and dig ditches with complete control.

### FEATURES

- Three-way hydraulic operation to raise/lower, tilt, and blade swing
- 45° blade swing / 15° tilt
- Fold down box ends on blade
- Rear steering
- 16' width
- Pintle swivel hitch
- Standard transport safety features



Available in Saskatchewan & Manitoba only

## LEON LAND SCRAPERS

Ideal for landscaping, road building, and burying stones.

### FEATURES

- 6.5, 10, 17, and 20 yards
- Hydraulic ejection system
- Ball steering
- Three piece cutting edge

### 8-WAY BLADE SCRAPERS

- 12' and 16' widths available
- Hydraulic tilt angle and lift



Available in Alberta only

# SOVEMA ROTOTILLERS

Designed for all types of terrain.

**LASER SERIES**  
Side-Shift Tiller

40" to 56" widths  
12 to 35 HP

**RBS SERIES**  
Side-Shift Tiller

60" widths  
30 to 45 HP

**RB SERIES**  
Fixed Tiller

60" to 64" widths  
30 to 40 HP

**RP SERIES**  
Fixed Tiller

64" to 80" widths  
35 to 60 HP

**RE SERIES**  
Fixed Tiller

80" to 88" widths  
55 to 85 HP

**RTX SERIES**  
Fixed Tiller

100" to 140" widths  
80 to 180 HP

FOR LANDSCAPING AND INDUSTRIAL APPLICATIONS



Available in Alberta only

**NEW**

## BRABER ROTOTILLERS

### 3-Point Hitch Rototillers

**FEATURES**

- 47" to 79" widths available
- 540 PTO
- 6.5" tillage depth
- 20 to 50 HP
- Six C-shaped tines per flange
- Skid shoes for depth control



Available in Saskatchewan & Manitoba only

## BRABER WOOD CHIPPERS

### 3-Point Hitch Wood Chippers

**FEATURES**

- 4" or 6" models available
- 540 PTO / 18 to 45 HP
- Multi-positional discharge angle
- Special hardened blades (1 fixed, 4 rotating)
- 360° chute rotation
- Gravity feed



Available in Saskatchewan & Manitoba only





# AGI POST POUNDERS



### RENEGADE & RENEGADE+ TRAILER MODEL

660 lbs hammer weight

Pounds posts up to 11'11" tall  
Renegade+ model pounds posts up to 13'8" tall with 720 lbs of hammer pressure



### OUTLAW & OUTLAW+ 3PT SIDE MAST

660 lbs hammer weight

Pounds posts up to 11'11" tall  
Outlaw+ model pounds posts up to 13'8" tall with 720 lbs of hammer pressure



### SHERIFF SKID STEER OR 3PT CENTRE MAST

660 lbs hammer weight

Pounds posts up to 11'3" tall  
Centre mast configuration improves centre of gravity and stability of the unit  
Shown with optional pilot auger



### POST HUGGER

Standard on all models.  
Helps align posts for added convenience and safety.



### OPTIONAL PILOT AUGER

Drills all soil conditions and most rock obstructions up to 40".

## KOENDERS SWATH ROLLERS

### Pull Behind or Direct Mount

Made from heavy-duty poly to avoid rust and dents. The ribbed drum design packs and tucks swath to prevent bunching.



Available in Alberta only

## SOVEMA HAY RAKES

### Save time and fuel with a Cropmaster Hay Rake

#### FEATURES

- Available with 10, 12, and 14 wheels
- Zinc-plated raking wheels
- Reinforced frame for extra durability
- Speed up drying time
- Spring loaded to adapt to the contours of the field
- Ideal for uneven hay land

#### OPTIONAL TANDEM REAR WALKING WHEELS



## BALE SPEARS

### 3-Point & Skid Steer Bale Spears



Brand and models vary by province

## BALE CARTS



Proven  
**RENTAL  
TOUGH**



#### RITEWAY BALE CART

##### Move up to 1,000 bales a day

- Pick bales from 48" to 72" in diameter
- Gently gather bales without damaging the wrapping
- Comes with steel twine guards to protect wheel bearings from bale twine



# BRILLION SEEDERS



## Pull type, skid steer, and 3-point hitch

- Ag Seeders, Landscape Seeders, and Till 'N Seed models available
- 6' to 12' cutting widths
- High capacity seed meters
- Large notched front roller
- Ensure precise metering and consistent depth of seed placement for proper germination



## PALLET FORKS

### Bucket & Skid Steer Pallet Forks

*Brand and models vary by province*



## LEVEL WIND WIRE SPOOLER

Uses existing tractor hydraulics

Receiver mounts to tractor drawbar or front end loader  
Optional 3PT hitch mount available



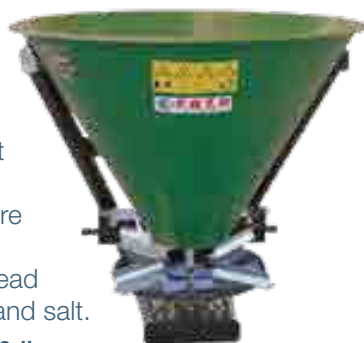
## FERTILIZER SPREADERS

### Sovema Fertilizer Spreader

Sovema 3-point hitch fertilizer spreaders feature a steel hopper and quickly spread fertilizer, sand, and salt.

**Capacity: 1,250 lbs**

*Available in Alberta only*



### Braber Fertilizer Spreader

Braber 3-point hitch fertilizer and grass spreaders feature a heavy duty poly hopper and stainless steel insert.

**Capacity: 1,160 lbs**

*Available in Saskatchewan & Manitoba only*



**BRABER ATV PULL MODEL ALSO AVAILABLE**



# U-DRAIN FLOOR DRAIN

See the grate-free advantage.

## NORSTAR U-DRAIN FLOOR DRAIN

### Narrow down your search for ideal floor drainage

Permanently cemented into your structure, the U-Drain drainage system substitutes the traditional grate with a pre-engineered slotted-trench design system with an easily accessible sump. There's no need to remove or replace anything.

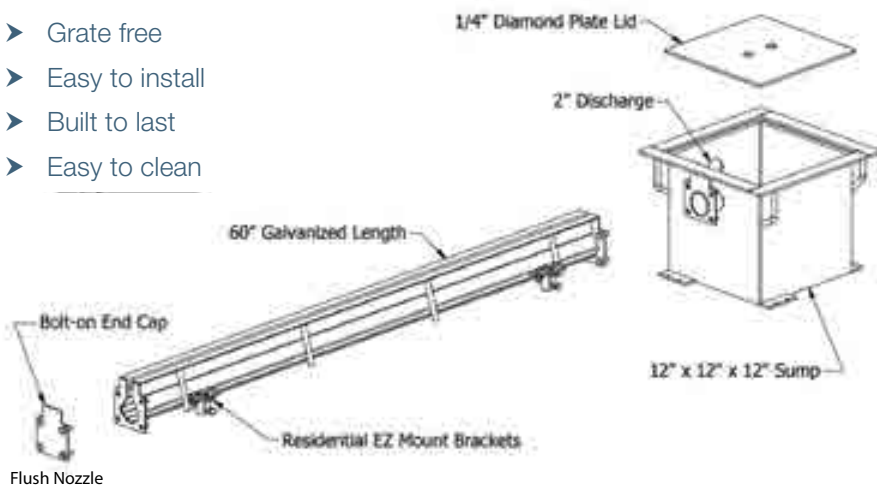
- Grate free
- Easy to install
- Built to last
- Easy to clean

### RESIDENTIAL Applications include:

- Home garages
- Pools
- Driveways
- Walkways

### COMMERCIAL Applications include:

- Farm shops
- Heavy equipment shops
- Parkades
- Aircraft hangars
- Equipment storage
- Manufacturing facilities



**Ideal for farm, industrial, automotive, and more!**





# FUEL LOCK

## FUEL LOCK PERSONAL

**Secure fuel storage for personal use.**

- Single user PIN entry
- Connect to new and existing pumps
- Automatic tank locking system
- Compatible with 120/240V pumps
- Weatherproof enclosure
- Upgrade to Fuel Lock Business anytime

## FUEL LOCK BUSINESS

**Secure, view, and track your fuel.**

All features of Fuel Lock Personal plus:

- Daily, weekly or monthly usage reports
- Manage multiple employees and pieces of equipment
- Track employee usage and frequency
- Get real-time notifications about fuel usage
- Small to large farms with bulk fuel tanks



**REAL-TIME ALERTS & USAGE REPORTS**



**CONNECT TO NEW & EXISTING PUMPS**



**MANAGE MULTIPLE EMPLOYEES**

# ENDURAPLAS DIESEL & DEF TANKS



*Availability varies by province*

## DIESEL & DEF TANKS

**Comes ready-to-use with a pump, gun, and auto shut-off nozzle.**

- Available in 25, 50, 75, and 100 US gallon
- Compact and narrow models available
- Flow rate of 10 GPM (diesel tanks) and 8 GPM (DEF tanks)
- DEF tanks are designed to safely handle and store corrosive diesel exhaust fluids



# FUEL TANKS

## MERIDIAN FUEL TANKS

**Made for temperature extremes  
-40° to +80°**

Meridian's ULC approved double wall containment tanks prevent costly leak and provide environmentally safe storage.

- Sizes range from 2,300 L to 75,000 L
- Skidded and non skidded options
- Agriculture and commercial designs
- Heavy gauge steel construction
- Fully equipped pump packages (20 to 40 GPM)
- Bottom fill systems (larger tanks)

### AG DUTY TANK 2300L

**505 imp gal / Double Wall Cradle**

Skid, Fill Rite 701 pump, hose retractor, level site gauge, drip tube, leak detection gauge

### AG DUTY TANK 4595L

**1000 imp gal / 70/30 Split with Skid**

Skid, Fill Rite 311 pump L with meter, level site gauges, (2) standard hose retractors with 8' posts, (2) drip tube, leak detection gauge

### AG DUTY TANK 4600L

**1000 imp gal**

Skid, Fill Rite 311VL pump, standard hose retractor with 8' post, level site gauge, drip pot, leak detection gauge

### HEAVY DUTY TANK 10,000L

**2200 imp gal**

Skid, Fill Rite 311 pump/meter package, standard hose retractor with 8' post, level site gauge, drip pot, leak detection gauge

## WESTEEL FUEL TANKS

**Transportable & Stationary Models**

### FLAT TOP ROAD-VAULT

**Single Wall Slip Tanks**

- Sizes range from 63 to 990 imp gal
- 99 imp gal and 150 imp gal farm diesel flat top tanks also available
- Mobile and convenient fuel storage



### DOUBLE WALL CROSS-VAULT

**Transport Canada/UN and ULC certified tank**

- Sizes range from 950 L to 4,500 L
- Crossroads of a stationary tank and a slip tank



### SINGLE WALL CRADLE TANK

**ULC certified, safe, and secure storage for your fuel.**

- Sizes range from 300 to 1,000 imp gallon
- Ground storage allows for faster transfer rates using fuel pumps
- Affordable and reliable fuel storage







## BUFFER VALLEY PRODUCTS

Storage solutions for feed, fertilizer, and treated seed.



*Stacks inside or on top of each other*

### 40 BUSHEL PALLET BIN

Safely store leftover seed in an easy to move container.

- 40 bu / 48 cubic feet
- 1 metric ton weight rating
- 49' W x 49' L x 51' H
- 15° hopper bottom slope with centre discharge
- Snap-on friction-fit lid
- Eyelets for overhead lifting
- Weather and rodent resistant



### 40, 50 & 100 BUSHEL PALLET BINS

Versatile, portable storage of grain, feed, and fertilizer.

- 40 bu to 100 bu / 50 cubic feet to 120 cubic feet
- 1–2 metric ton weight rating
- Steep hopper slope for quick and easy unloading
- Tie down pockets
- Heavy duty steel stand
- UV resistant and rodent proof



### 100 & 150 BUSHEL HOPPER BINS

Stationary hopper bottom bins for livestock and grain producers.

- 100 bu / 120 cubic feet 12' tall on stand
- 150 bu / 180 cubic feet 16.5' tall on stand
- 55° hopper bottom slope
- Adjustable boot and slider
- Heavy duty bolted stand
- Weather and rodent resistant



# SlowRelease Foliar Fertilizers

Fine tune your fertility program in response to weather conditions and crop performance.

## SlowRelease

### Liquid Nitrogen Foliar Fertilizers

- Provides an alternative nitrogen source while delivering supplemental plant nutrients throughout the growing season
- Low salt, UV-activated, and crop safe
- Sticks to the leaf and feeds the plant over a 30 day period
- Applied as a foliar and mixes readily with liquid fertilizers and most herbicides
- Multiple blends available depending on crop type and nutrient deficiencies in the field



Wheat treated with SlowRelease and ACF-SR

## SlowRelease Health

### Plant Health Products

- Combines the advantage of slow release nitrogen with the disease suppression of chloride
- Acts as a fungicide replacement with an added nutrient package
- Ideal for cereals, canola, and legumes
- Applied as a foliar and mixes readily with liquid fertilizers and most herbicides and fungicides



Canola treated with SlowRelease, Micronutrients, and ACF-SR

## Micronutrients

### Readily available source of vital micronutrients

- Use for increased fertility or when micronutrient deficiencies occur in the field
- Can be added to any SlowRelease product



Sticks to the leaf and feeds the plant for up to 30 days



# Humic Products

High-grade humalite sourced from Hanna, Alberta

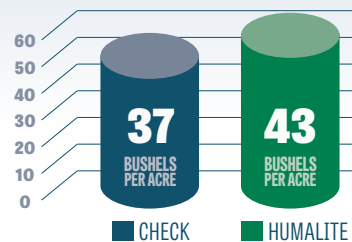


HUMALITE ON THE LEFT

## Hard Red Spring Wheat – Chamberlain, SK

### Planting & Treatment Details

- ▶ Granular humalite applied in-furrow at 40 lbs per acre
- ▶ 100 lbs 46-0-0
- ▶ 30 lbs 11-52-0
- ▶ **6 bu/acre increase** when compared to control field



HUMALITE ON THE RIGHT

## Granular Humalite

64% Humic Acid | 3.04% Fulvic Acid

- ▶ Made with pure, raw humalite directly from the source to ensure the highest quality product for the best possible results
- ▶ Large, coarse granules allow for easy handling
- ▶ Canadian-sourced and certified organic
- ▶ Ideal for broadcast or in-furrow applications
- ▶ Spreader, floater, and air compatible

## Benefits of Humalite

- ▶ High water retention for effective drought mitigation
- ▶ Increased nutrient uptake
- ▶ Accelerated crop residue breakdown
- ▶ Enhanced microbial activity
- ▶ Improved soil structure and high carbon levels
- ▶ Reduced hardpan
- ▶ Gain back poor producing acres from salinity or alkali
- ▶ Flexible application any time of the year



# ACF-SR

Five species of plant growth-promoting bacteria

## AdvancedAg ACF-SR

Function-focused bacteria to enhance soil and plant health

- Enhances root growth and development
- 100% organic, non-toxic, chemical and pathogen free
- Can be applied in-furrow or used as a foliar
- ACF-SR is also used in small scale applications (lawn health and restoration, greenhouse applications, and golf course and turf operations)



ACF-SR ON THE LEFT

## Key Bacteria Functions

- Fixing nitrogen from the atmosphere
- Solubilizing essential nutrients, such as phosphorus and potassium
- Producing plant growth hormones



BEFORE



ACF-SR



### Dry Pasture Application

#### Customer Testimonial

“I am thrilled that I now have an **established, aggressive root system that thrives with very little moisture.** For the first time in 25 years I will be able to bale hay from the pasture to feed my cattle. **I cannot recommend this product enough. It truly did make a difference!**”  
 – Delar Cattle





Behnke 53' semi sprayer trailers are available in spring or air ride suspensions. These sprayer trailers are engineered to handle the load of today's largest sprayers plus haul tanks on the upper deck.

**BEHNKE**  
**Behnke 53' Tri-Axle Sprayer Trailer**

**Load up Your Tanks and Your Sprayer**

- 13' 5th wheel – equipped with winch track and sliding winches
- (3) 25,000 lb air brake axles
- 255/70R22.5 Tires
- Air ride suspension with dump valve
- Multi use beavertail and ramps
- Flip up side running boards
- Removable front wheel chocks with under-slung storage hangers
- 13' upper deck
- Treated wood deck
- LED and strobe lights
- Water tank available



**BEHNKE**  
**9.5 x 53' Air Ramp Equipment Trailer**

**(3) 25,000 lb Air Brake/Air Ride Axles**

- T1 – 100 KSI main frame
- (3) 25,000 lb axles
- 255 / 70R22.5 tires
- Air ride with dump valve and pressure gauge
- 12" center 4" I-beam cross members
- Air operated front lift for lower to upper deck
- Rear ramps air actuated for easy loading
- Double break beavertail
- Apitong decking
- Flip out over width clearance lights

Brand selection may vary by province.



Flaman ST series of Agriculture Sprayer Trailers have been custom designed in-house with safety, speed, and ease of use in mind. Built on a 53' Behnke transport trailer, these multi-purpose units are loaded with features to increase efficiency and reduce downtime.

## BEHNKE Flaman ST Series 53' Sprayer Trailer

**Safety, Speed, Storage, and Convenience to Go**

- Triple axle
- 80,000 lb GVWR
- 22.5 tires
- Air ride suspension
- Lightweight Apitong hardwood decking
- Crossmembers on 12" centres
- Dual 2 speed jacks
- Deck space for extra storage
- Tote cage
- Stowable stairs and grating tread
- Fertilizer grade water tanks
- Chembine Hot-Tank (available on ST-9200)



## TRAILTECH Combine Trailer

**The Professional Choice  
for Combine Trailers**

- Heavy duty flip up sides extend to 13'
- 12" x I-Beam
- Tandem or triple axle option
- 20,000 lb axles with air brakes
- Torque tube 5th wheel



## BEHNKE Pintle Equipment Trailer

**Big trailers for big jobs!**

- 9.5' wide by 31' long deck
- 6' rear air ramps
- (3) 25,000 lb air brake axles
- 235/75R17.5 tires
- Low arc spring suspension
- Air bag tilt with air lock on the tilt deck
- T-1 main frame
- Oak decking
- 2 speed landing gear

### SPECIAL ORDER Trailtech Header Transports

**Easily transport and store your header**

Brand selection may vary by province.



# FLAT DECK TRAILERS



CELR270



H370GN

## Construction / Commercial Series

### CELR270 18' & 20'

- 6" channel main frame
- (2) 7,000 lb spring axles
- Protected LED lights and wiring
- Teardrop fenders / slide in ramps
- 8,000 lb drop foot jack

### H370GN

- 24' deck with beavertail on flip up centre
- 5' beavertail with full width tech ramps
- (3) 7,000 lb rubber ride axles
- Electric braking
- Curb weight: 6,575 lb

## Trailtech Flat Deck Trailers



L270T DT



L270T

## Premier Series

### L270 DT – 20'

- 18' deck + 2' dovetail
- (2) 7,000 lb torsion axles
- Adjustable ball coupler/pintle
- Curb weight: 3,026 lb

### L270T – 20'

- 16' tilt + 4' stationary
- (2) 7,000 lb torsion axles
- Electric braking
- Curb weight: 3,173 lb

## Industrial Series – Market's Strongest Frame



MODEL SHOWN WITH  
OPTIONAL ALUMINUM RIMS

### TD210 – 26'

- 26' deck + 5' beavertail
- (2) 10,000 lb axles
- 5990 lb curb weight

Brand selection may vary by province.

**ENGINEERED  
1 PIECE FRAME**  
35% Stronger than mild I-Beam



## Diamond C Flat Deck Trailers

### TANDEM DUAL Gooseneck Flat Decks

Available in Axle Capacities from (2) 7000lb to (3) 12,000lb Axles and lengths from 20' to 53'

- 5' dove with spring-assisted, full width max ramps, floating ramp hinges make for a smooth transition from ramp to dove



MAX RAMPS



307HDT

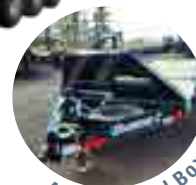
### TILT TRAILER 307HDT Manufactured I-Beam Frame

- Low profile design
- 16' cushion tilt with lockout
- A-frame tool box
- 12K jack
- (3) 7,000 lb torsion axles



### LPX307 Extreme Duty Flat Deck

- I-Beam frame for low profile design
- (2) 7,000 lb or (3) 7,000 lb axle configurations
- A-frame tool box
- 12K jack



A-Frame Tool Box

## Southland Flat Deck Trailers



HB20

### SOUTHLAND 20' Highboy Equipment Trailer

- (2) 7,000 lb E-Z lube axles
- 6' aluminum ramps
- 7k drop leg jack
- Rub rail and stake pockets / LED lights



LBAT

### SOUTHLAND 16' Steel Car Hauler

- (2) 35,00 lb axles
- 16' deck and 82" deck width
- NEW heavy duty fenders
- 5" HSS tube main frame



Slide in Ramps

## Hydraulic Trailers



### DIAMOND C Hydraulic Tilt

**Never manually lower ramps again!**

- 12' powertail with auto lock
- Axle configurations: (2) 10,000 lb, (3) 10,000 lb, (2) 12,000 lb or (2) 15,000 lb
- Available lengths: 30', 32', 35', 38', 40'
- Remote control



### DIAMOND C 22' Tilt DET207

**Versatile Deck-Over Tilt**

- Gooseneck or pintle
- (2) 7,000 lb Axles
- 20' deck / 2' dovetail
- Torflex suspension
- Hydraulic and power tilt



### TRAILTECH Multi-Deck MD270

**Multi-Deck get 4 Trailers in 1!**

- Gooseneck or pintle
- (2) 7,000 lb axles
- 20' deck / 2' dovetail
- Torflex suspension
- Hydraulic and power tilt

Brand selection may vary by province.



# DUMP TRAILERS

## Diamond C Dump Trailers



MDT 12

### MDT 12 12' Diamond C Dump

- I-Beam main frame
- Front mount 3 stage telescopic hoist
- 3-way tailgate
- E-Z lube axles
- (2) 6,000 lb axles
- 24" high sides
- 12 gauge wall and slides
- HD fenders
- Roll tarp
- Full bead blast, zinc rich primer, and powder coat paint



LPT 14

### LPT 14 14' Diamond C Dump

- I-Beam main frame
- Front mount 3 stage telescopic hoist
- 3-way tailgate
- E-Z lube axles
- (2) 7,000 lb axles
- 24" high sides
- 10 gauge wall and slides with 4" stiffener
- HD fenders
- Roll tarp
- Full bead blast, zinc rich primer, and powder coat paint



LPT 16

*Diamond C's I-Beam main frame is lighter and stronger than traditional mild beam.*

### LPT 16 16' Diamond C Dump

- Front mount 3 stage telescopic hoist
- 3-way tailgate
- E-Z lube axles
- (3) 7,000 lb axles
- 24" high sides
- 10 gauge wall and slides with 4" stiffeners
- HD fenders
- Roll tarp
- Full bead blast, zinc rich primer, and powder coat paint

## Trailtech Dump Trailers

### Dump Trailers

- 10 ton Champion hoist
- Tarp
- All tubing frame
- HD fenders
- Complete wiring harness
- Available in 12 to 14 tags
- 16' goosenecks

14' DUMP



16' GOOSENECK DUMP

**Trailtech Tuffguard** comes in several options for dump trailers. Save your money and protect only what is needed with strategic coverage on the chassis, fenders, and the front of the box.

Brand selection may vary by province.



SL714 – 16K

**SL714 – 16K**  
**14' Southland Dump**

- (2) 8,000 lb axles
- 6" rectangular tube main frame
- 10 ton Champion scissor hoist
- Lockable aluminum toolbox with 10 amp 110V built in charger
- HD aluminum slide out ramps
- 3 way tailgate with locks on each door with spring loaded door tie backs
- 12,000 lb drop leg jack
- Adjustable ball coupler



SL714 – 16K HD

**SL714 – 16K HD**  
**14' Southland Dump**

- (2) 8,000 lb axles
- 6" rectangular tube main frame
- 10 ton Champion scissor hoist
- Lockable aluminum toolbox with 10 amp 110V built in charger
- Load range F rated tires
- 12K hydraulic front jack
- 7 gauge floor with 10 gauge sides
- 3 way tailgate with locks on each door with spring loaded door tie backs
- HD aluminum slide out ramps

**Southland**  
**Dump Trailers**



SL610 – 10K

**SL610 – 10K**  
**10' Southland Dump**

- 6" rectangular tube construction
- Scissor hoist lift
- (2) 5,200 lb spring axles
- 12 gauge bed with 14 gauge sides
- Barn door style
- Galvanized formed slide in loading ramps



SL714 – 14K

**SL714 – 14K**  
**14' Southland Dump**

- (2) 7,000 lb spring axles
- 6" rectangular tube main frame
- 9 ton Champion scissor hoist
- Lockable alum tool box with 4 amp 110V built in charger
- Galvanized formed loading slide in ramps



# ENCLOSED TRAILERS



## CROSS TRAILERS 24' Auto Hauler

### Heavy Duty Rear Ramp Door

- Rectangular tube construction main frame, wall posts, and roof bows
- (2) 5,200 lb Dexter axles
- Available in various lengths and heights



## CROSS 7x14 Cargo Trailer 7' Interior Height for UTVs

- Rectangular tube construction main frame, wall posts, and roof bows
- 3/4" floor and 3/8" side walls
- RV sideman door
- Drop ramp with flip over extension
- Available in various lengths

**Work or play! We can help you find the perfect trailer.**



*Xpress Aluminum Trailers are ideal for homeowners, as well as landscapers or those needing a light-weight option without losing out on quality.*

## ALCOM Xpress Series Cargo All Aluminum Frame and Rims

### Features:

- 6' x 12' + V-nose
- Rear double door or ramp
- 16" wall studs
- 24" roof and floor studs
- Spring suspension
- LED lights
- Chrome trim package
- Interior lighting wth switch
- Water resistant walls and flooring
- 24" checker plate front guard

### Options:

- Additional height available
- Upper and lower cabinets
- Extra tie downs
- Recessed E-track
- Motorcycle packages
- Ladder racks
- Custom flooring available
- Finished interior packages



## XR SERIES Cargo Trailers

**A Trailer That Gets The Job Done**

- HSS structural tubing – main frames
- HSS structural tubing uprights
- Rivet-less aluminum exterior
- Exterior bonded with “VHB” two sided tape
- Aluminum rims
- LED tail lights
- 24” checker plate front
- Torsion axles
- Various colours available



MODEL SHOWN:  
6' X 14' WITH V-NOSE

CARGO BOX	AXLE
6' x 14' XR Cargo	(2) 3,500 lb
7' x 14' XR Cargo	(2) 3,500 lb
7' x 14' XR Cargo Sport	(2) 3,500 lb
7' x 16' XR Cargo	(2) 3,500 lb
8' x 16' XR Cargo	(2) 6,000 lb
8' x 26' XR Cargo*	(2) 6,000 lb
Length includes 2' of V-nose for XR Series 4' V-nose with ramp door	

## LT SERIES Cargo Trailers

**Great Economy-Priced Trailer**

- HSS structural tubing – main frames
- 030 Rivet-less aluminum exterior
- 3/8” Plywood – interior walls
- 5/8” Plywood – floor
- Enclosed wiring
- Galvanized hardware
- Aluminum molding top / bottom
- Rubber mounted lighting
- 12” checker plate front
- Rivet-less smooth sides
- Aluminum fenders
- Drop spring axles
- Bias ply tires

CARGO BOX	AXLE
5' x 10' LT	(1) 2,900 lb
5' x 12' LT	(1) 2,900 lb
6' x 12' LT	(1) 2,900 lb
6' x 12' LT	(2) 3,500 lb
6' x 14' LT	(2) 3,500 lb
6' x 14' LT	(2) 3,500 lb
7' x 14' LT	(2) 3,500 lb
7' x 16' LT	(2) 3,500 lb
7' x 18' LT	(2) 3,500 lb
7.5' x 16' LT	(2) 3,500 lb
7.5' x 18' LT	(2) 3,500 lb
7.5' x 20' LT	(2) 3,500 lb
8' x 16' LT	(2) 3,500 lb
8' x 18' LT	(2) 3,500 lb
8' x 22' LT	(2) 5,200 lb
8' x 26' LT	(2) 5,200 lb



MODEL SHOWN:  
7'X16' SPORT, 86" TALL

*All 7'x16' XR Series Cargo models come standard with black hard top flooring*





TCJTX714TAR

**CJAY**  
**V-Nose Premium Cargo Trailer**

- 7' x 14' + 2' V-nose
- Tandem 3,500 lb torsion axles
- Integrated frame
- 83" interior height
- One piece aluminum roof
- Protected wiring
- 24" high aluminum checker plate rock guard



TCJFX716TAR

**CJAY**  
**V-Nose Cargo Trailer**

- 7' x 16' V-nose trailer
- Tandem 3,500 lb torsion axles
- Rubberized automotive style undercoating
- One piece aluminum roof
- Heavy duty ramp door
- Protected wiring
- Integrated frame



TRCRDLX714TA

**RC TRAILERS**  
**Flat Top V-Nose Cargo Trailer**

- 7' x 14' flat top V-nose cargo trailer
- Tandem 3,500 lb spring axles
- Finished interior
- Inverted stone guard
- Wedge front construction



TRCRSCT821TA

**RC TRAILERS**  
**Car & Toy Hauler**

- 8.5' x 21' round top car and toy hauler
- Front and rear ramp door
- 78" interior height
- Finished interior
- 2 side doors for fueling
- Beavertail for easy loading

**Horse & Stock Trailers**



2, 3 & 4-PLACE  
MODELS AVAILABLE

**SUNDOWNER TRAILERS**  
**Super Sport Horse Trailers**

- Gooseneck and bumper pull available
- 39" stall width
- Padded airflow head and shoulder dividers
- All aluminum construction

**Don't see what  
you need?**

***We take custom  
factory orders.***

Contact your nearest Flaman for  
more information.

# SPECIALTY TRAILERS

**SPECIAL ORDER**



## **CROSS** 8.5 x 24 Cross Office Trailer

**Do you need on site space for your crew?**

- (2) 5,200 lb torsion axles
- 36" x 76" RV entry side door
- Plywood walls and drymax Floor
- Seamless white vinyl roof
- Insulated floor package
- Insulated walls
- Interior dome lights
- 35,000 BTU furnace package
- Thermostat, CO<sub>2</sub> detector, fire extinguisher
- 2' aluminum cabinet
- Stand-up closet with shelf and rod



**ATC**

## **Aluminum Stackers**

**Available in 20' to 53' lengths**

- Tag and gooseneck style hitches
- Tandem and tri-axle configurations
- With low profile tilting lift
- Premium escape door
- Full interior package



**SPECIAL ORDER**

**Call us for pricing and available options!**

**SPECIAL ORDER**



## **ATC** Aluminum Car Hauler

**Lots of customizable options including:**

- Cabinets
- Aluminum rims
- 12 volt lighting
- Premium escape door





# SLED TRAILERS

## Royal XR Series Sled Trailers



MODEL SHOWN:  
XRARSMT35-820-78 3 PLACE



MODEL SHOWN:  
XRARSMT35-826-78 4 PLACE

### XR SERIES 3 Place Highboy Sled Trailer

- 8' wide standard highboy
- (2) 3,500 lb axles
- Aluminum interior and mez deck flooring
- 16' + 4' V-nose

### XR SERIES 4 Place Highboy Sled Trailer

- 8' wide standard highboy
- (2) 6,000 lb axles
- Aluminum interior and mez deck flooring
- 22' + 4' V-nose

## Royal LT Series Sled Trailers



MODEL SHOWN:  
LARSMT35-820V-86 LB



MODEL SHOWN:  
LARSMT52-826-86 HB

### LT SERIES 3 Place Lowboy Sled Trailer

- (2) 3,500 lb axles
- 16' straight wall + 4' V-nose
- Mez deck flooring
- 86" interior height
- Front and rear ramps

### LT SERIES 4 Place Highboy Sled Trailer

- (2) 5,200 lb axles
- 22' straight wall + 4' V-nose
- Mez deck flooring
- 86" interior height
- Front and rear ramps

Brand selection may vary by province.

# UTILITY TRAILERS



## ALUMA 548 Utility

- 54" x 96"
- 2,200 lb torsion axle
- Aluminum frame and floor
- Aluminum fenders



## ALUMA A8810 ATV

- Aluminum frame and floor
- Bed size: 88" x 126.75"
- 2,200 lb torsion axle
- Curb weight: 525 lb
- 13" Tires



## ALUMA 8114 - 14' Utility

- Aluminum frame and floor
- Bed size: 81" x 145"
- Aluminum fenders with guard
- 3,000 lb rubber torsion axle



## ALUMA UTV - 12'

- 3,000 lb torsion axle
- Curb weight: 760 lb
- Bed size: 71" x 150" & 57" ramp
- 24" aluminum shield with storage box

We carry a wide variety and models of utility trailers to help you get the job done!



## LEGEND 7x12 Utility trailer

- 3,500 lb torsion Axle
- Integrated F-channel frame
- 48" fold in, removable bi-fold gate
- Stake pockets
- LED lighting
- Also available: 7' x 14'



## TRAILTECH BD2-12 Utility Trailer

- 3,500 lb spring axle
- Salt shield
- One piece steel slide-in ramps
- Stake pockets
- LED lighting
- Ski tie-down bars
- Also available: 16' and 22'



6' X 10' MODEL SHOWN

## OASIS Utility Trailer

- 2,990 lb spring axle
- Swing-up jack
- 3" channel frame
- Slide-in ramps
- Fir plank decking
- Also available: 6' x 12' and 6' x 14'

Brand selection may vary by province.



## Tillage Equipment Rentals



### Kinze Mach Till High Speed Discs

Ideal for trash management and seed bed preparation!



### Wishek Discs - 8' to 36'

The heaviest disc on the market!

- 13 HP per foot of disc required
- Most effective way to break up land or improve drainage

▶▶▶ Rental equipment may vary depending on dealer location.

## Grain Moving Equipment Rentals



### VRX Grain Vac

Move up to 5000 BU/HR!



### Grain Extractor



### Batco 1515

14' Transfer Auger



### Batco 35' Conveyor



### Grain Bagger

# Tillage Equipment Rentals



## Brillion Disc Ripper

Rugged tillage implement that can handle the stresses of deep ripping in hard, compacted soil.



## Riteway Land Rollers

Convenient narrow transport

- Great for many applications like pulse crops or hay land
- Increase germination – every seed has good contact with the soil
- Smooths fields for straight cutting



## Schulte 36' DHX Disc Harrow

Handle all the tillage and residue management on your farm.



## Riteway Heavy Harrows

Riteway Harrows are durable, reliable, and efficient.

# Earth Moving Equipment Rentals



## 12' Pull Blade



## Landscraper

Ideal for landscaping, road building and burying stones.



## Box Scraper



# Hay & Livestock Equipment Rentals



## Haukaas Bale Carts

Move up to 1000 bales/day!

- Gentle on bales and the hayfield
- Quickly gather bales and place in semitrailer-sized groups



## Post Pounders

Fencing made easier

- No tractor needed / easy operation
- Self-contained with a 13 HP Honda motor
- For building new fences or making repairs

▶▶▶ Rental equipment may vary depending on dealer location.



## Sovema 12 or 14 Wheel Hay Rake

Decrease drying time, increase productivity



## Jiffy Hay Float

Level your pasture and hay land



## LEVEL-WIND Wire Roller

Optional grain bag roller attachment now available



## TPH BRILLION 10' Grass Seeder

The most accurate way to seed grass

# Landscape Equipment Rentals



## Schulte Rough Cut Mowers

Tough and dependable

- Great for mowing crop residue, pastures, weeds or roadsides
- Ultra narrow transport width for added safety
- Designed to work in the toughest terrain



## Schulte Rock Pickers

Build larger stone piles

- Pick rocks faster
- Good for spot picking in fields
- Tough and dependable

## Schulte SRW1400 Rock Rake

Available only in the **Yorkton, Moosomin, and Swan River region**

## Construction Rentals

4 models available



SKID STEERS



MINI EXCAVATORS



SCISSOR LIFTS



TELEHANDLERS



COMPACTION

Compaction Headquarters. Whatever your project calls for, we have the machine to do the job!



HEATERS



### CONCRETE TOOLS

We rent quality HILTI tools at Flaman for all your hammer drilling and jack hammering needs.

### WE RENT:

- |                 |                     |              |                           |
|-----------------|---------------------|--------------|---------------------------|
| Skid Steers     | Auger Bits 6" - 30" | Snow Blades  | Grapple Forks             |
| Mini Excavators | Hyd Auger Drives    | Snow Blowers | Pallet Forks              |
| Scissor Lifts   | Auger Extensions    | Snow Buckets | Brooms                    |
| Telehandlers    | Frost Bits          | Sweepers     | Buckets                   |
| Heaters         | Bale Spears         | Tree Scoops  | <i>Tooth &amp; Smooth</i> |
| Concrete tools  | Hyd Jack Hammers    | Trenchers    |                           |

Yorkton, SK **306.994.0654** | Moosomin, SK **306.802.4808** | Swan River, MB **204.400.5621**

# TRAILER RENTALS



14' DUMP SHOWN  
10' - 14' SIZES AVAILABLE

## Need to haul dirt, snow or debris?

The two-way tailgate features a rear double door and spreader gate, allowing for fast, controlled loading. Rent one of our 10', 14', and 16' tandem axle dump trailers today.

Dump Trailers
8' Hydraulic Dump Trailer
10' Tandem Dump Trailer
12' Tandem Dump Trailer
14' Hydraulic Dump Trailer
16' Gooseneck Hydraulic Dump Trailer



## These trailers tilt for easy loading.

Tilt Deck Flatdeck Trailers
6'X12' Utility Trailer Tilt
16' TiltTrailer
18' TiltTrailer
20' Tilt Trailer
20' Lowboy Tilt Trailer with Winch
20' H270 Highboy Tilt Trailer with Winch



24' GOOSENECK FLATDECK SHOWN  
20' - 30' SIZES AVAILABLE

## Great for general farm, hotshot or long haul trucking.

We have 20' to 30' trailers available with capacity up to 20,000 lb.

Highboy Flatdeck Trailers
18' H-260 Flatdeck Trailer
20' H-270 Flatdeck Trailer
20' H270 Tilt Trailer with Winch
20'+5' H-270 Flatdeck Trailer
25'+5' H-270 Flatdeck Trailer
26'+5' TD Pintle Flatdeck Trailer
30'+5' TD215 Pintle Flatdeck Trailer

Gooseneck Flatdeck Trailers
26'+5' TD 210 Gooseneck Highboy Trailer
30'+5' TD 210 Gooseneck Highboy Trailer
30'+5' TD 215 Gooseneck Highboy Trailer
36' Tri-Axle Gooseneck Highboy Trailer



18' LOWBOY SHOWN

Lowboy Flatdeck Trailers
16' Lowboy Flatdeck Trailer
18' Lowboy Flatdeck Trailer
20' Lowboy Flatdeck Trailer

Prices subject to change without notice. Sizes may vary upon location, call your local Flaman dealer for available sizes.

**JOIN OUR TEAM!**  
**Looking to expand your business?**

Join our growing team of rental dealers in Western Canada. You can expect a supportive network of like-minded business people to help you grow your business and be successful. Last year we rented equipment to over **40,000 customers** in farming, oilfield, construction and more. Investment in equipment is required. Proudly serving Western Canada since 1959.



# Sizes vary upon location.

Call your local Flaman dealer for the available sizes.



4'X8' UTILITY SHOWN  
4'X8' - 5'X8' SIZES AVAILABLE



7'X16' WITH V-NOSE  
ENCLOSED SHOWN

## Do you have leaves and branches to haul to the landfill?

Our utility trailers are perfect for the job.

Utility Trailers
2-Place Ski-doo Highboy
4'X8' Utility Trailer <i>(Has sides)</i>
6'x10' Utility with Sides
6'X12' Tilt Deck



## Haul your cattle or horses in one of our easy pulling stock trailers.

We have 15' to 24' trailers available.

Horse & Stock Trailers
10' 2-Horse Trailer
14' 2-Horse Trailer
15' 2-Horse Trailer
16' Stock Trailer
20' Stock Gooseneck Trailer
24' Stock Gooseneck Trailer

## Moving? Need some temporary, mobile storage?

Various sizes of cargo trailers available  
Ramp or barn door options

Utility Trailers
8' Enclosed Trailer
10' Enclosed Trailer
12' Enclosed Trailer
14' Enclosed Trailer
16' Enclosed Trailer
18' Enclosed Trailer
20' Enclosed Trailer
22'+4' Enclosed Trailer
24' Enclosed Carhauler Trailer



## Ground level loading makes loading and unloading a breeze.

AirTow Trailer
AirTow 14' 10k Capacity

Prices subject to change without notice. Sizes may vary upon location, call your local Flaman dealer for available sizes.

**BECOME A  
FLAMAN  
RENTAL DEALER**

Alberta - Call Ken  
**587.206.8359**

Saskatchewan & Manitoba - Call Cole  
**306.700.3823**



# FLAMAN

## Store Locations

### Alberta

Fairview	780.900.4710
Nisku	587.206.8359
Edmonton N.	587.206.8179
Medicine Hat	587.206.8163
Lethbridge	587.800.7921

### Saskatchewan

Prince Albert	306.400.3361
Saskatoon	306.700.3823
Yorkton	306.994.0654
Southey	306.993.9688
Swift Current	844.966.0962
Moosomin	306.802.4808

### Manitoba

Swan River	204.400.5621
------------	--------------



- Store Location  
Sales & Rentals
- Rental Dealer  
Location
- Franchise  
Opportunities  
Rentals

## Rental Dealer Locations

### Peace Country

Dawson Creek	250.219.2034
Falher	780.837.6105
Grande Prairie	1.800.390.6924
High Level & La Crete	780.926.6468
High Prairie	780.523.1405

### Southern Alberta

Acadia Valley	403.664.8296
Cardston	403.653.4495
Foremost	403.867.2436
Fort Macleod	403.915.3499
Milk River	403.647.3790
Taber	403.315.3694

### Central Alberta

Atmore/Grassland	780.212.7931
Barrhead	780.674.2146
Bon Accord/Morinville	780.921.3002
Carstairs	403.337.0009
Daysland	780.374.3786
Evansburg	780.727.2149
Fort Saskatchewan	780.998.2058
Lloydminster	780.870.8900
Ponoka	403.783.6866
Red Deer County	403.302.4737
Rimbey	403.843.3030
Ryley	780.446.2684
Smoky Lake	780.656.3881
Stettler	403.742.5300
Stony Plain	780.963.2078
Sundre	403.638.4930
Thorhild	780.398.3944
Three Hills	403.443.5770
Vegreville	587.280.2474
Westlock	780.349.3223

### Saskatchewan

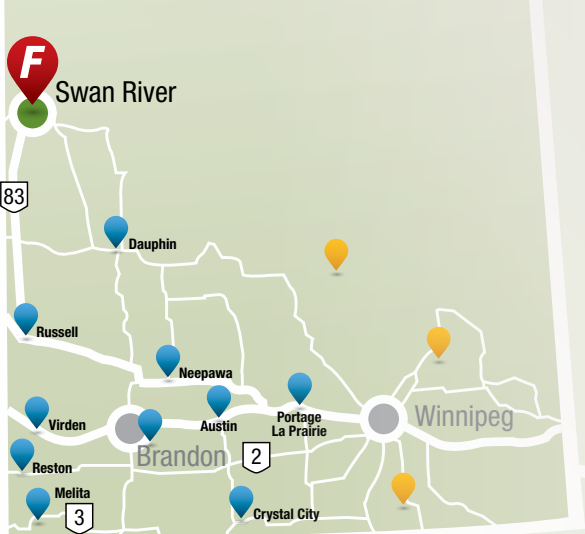
Assiniboia	306.642.4621
Canora	306.563.6426
Cudworth	306.256.2300
Elrose	306.378.7804
Estevan	306.421.0280
Hoosier	306.460.9650
Humboldt	306.682.2574
Lloydminster	780.870.8900
Maple Creek	306.662.2262
Pangman	306.442.7400
Shaunavon	306.297.1400
Swift Current	306.773.8890
Unity	306.228.2172
Wilkie	306.843.8275
Wynyard	306.554.2511
Yorkton	306.783.1689

### Manitoba

Austin	204.637.2515
Brandon	204.728.4554
Crystal City	204.825.0170
Dauphin	204.638.4401
Melita	204.522.3202
Neepawa	204.476.2348
Portage la Prairie	204.857.8764
Reston	204.877.3729
Russell	204.773.2268
Virden	204.748.2283

### Montana

Conrad, MT	406.467.2901
Helena, MT	406.449.1269
Power, MT	406.467.2901







## ALBERTA

### Edmonton N.

587.206.8179

8910 Yellowhead Trail

### Medicine Hat

587.206.8163

3377 Gershaw Dr SW

### Edmonton S.

587.206.8359

2310 Sparrow Dr.  
(Nisku)

### Fairview

780.900.4710

10917 92nd Ave  
(Peace Country)

### Lethbridge

587.800.7921

16 Broxburn Boulevard

## SASKATCHEWAN

### Prince Albert

306.400.3361

Hwy #2 South

### Saskatoon

306.700.3823

Hwy #16 & 71st St

### Swift Current

844.966.0962

2500 South Service Rd W

### Yorkton

306.994.0654

Hwy #16 East

### Moosomin

306.802.4808

Hwy #1 West

### Southey

306.993.9688

Hwy #6

## MANITOBA

### Swan River

204.400.5621

Hwy #83A

## GRAIN SYSTEMS

### Alberta

587.206.8359

### SK & MB

587.206.8356

Pre-Owned & Clearance

[www.flamanagriculture.com/inventory](http://www.flamanagriculture.com/inventory)

Shop online on your own time.

[www.flaman.com](http://www.flaman.com)